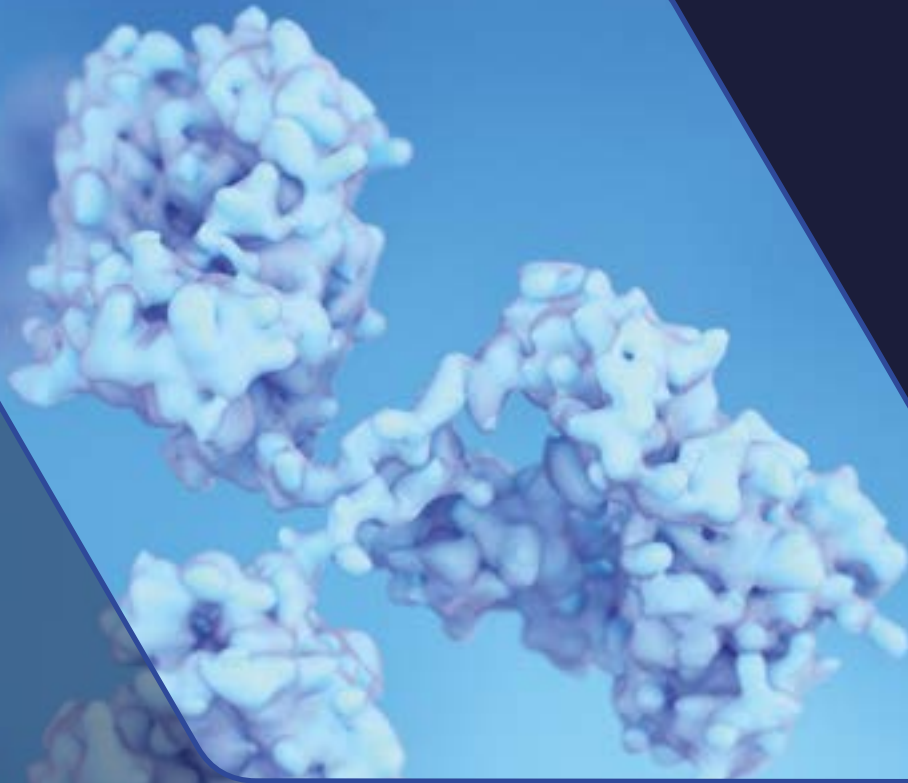


ANTIBODIES



Bertin Bioreagent offers an exclusive & unique range of monoclonal antibodies

- High Specificity
- Premium Quality
- Custom labeling upon request

ANTIBODIES

EXCLUSIVE & UNIQUE RANGE OF MONOCLONAL ANTIBODIES

Bertin Bioreagent distributes primary monoclonal antibodies for various applications, including but not limited to ELISA, Western Blot, Immunofluorescence, Immunocytochemistry, Immunohistochemistry. Our antibodies are mostly used for research areas such as neurodegenerative diseases, epigenetics, and DNA repair. They can also help researchers study transcription factors and molecules related to transcription factors.

All our antibodies are produced from mouse ascitic fluids.

All antibodies have to be stored at -20°C – For research use only

NEURODEGENERATIVE DISEASES (1/2)				
Cat#	Designation	Antigen	Clone	Application
A03200	Prion Protein Monoclonal Antibody - Pri 308	Anti-PrP Ab raised against a synthetic peptide representative of human 106-126 sequence	Pri 308	EIA, WB, EIA, WB
A03202	Prion Protein Monoclonal Antibody - SAF 32	Anti-PrP Ab raised against a preparation of SAF (scrapie associated fibrils) from infected hamster brain	SAF 32	IHC, EIA, FC, WB
A03203	Prion Protein Monoclonal Antibody - SAF 53	Anti-PrP Ab raised against a preparation of SAF (scrapie associated fibrils) from infected hamster brain	SAF 53	EIA, FC
A03204	Prion Protein Monoclonal Antibody - SAF 54	Anti-PrP Ab raised against a preparation of SAF (scrapie associated fibrils) from infected hamster brain	SAF 54	IHC
A03205	Prion Protein Monoclonal Antibody - SAF 61	Anti-PrP Ab raised against a preparation of SAF (scrapie associated fibrils) from infected hamster brain	SAF 61	EIA, FC
A03206	Prion Protein Monoclonal Antibody - SAF 70	Anti-PrP Ab raised against a preparation of SAF (scrapie associated fibrils) from infected hamster brain	SAF 70	WB
A03207	Prion Protein Monoclonal Antibody - SAF 83	Anti-PrP Ab raised against a preparation of SAF (scrapie associated fibrils) from infected hamster brain	SAF 83	EIA, FC, WB
A03208	Prion Protein Monoclonal Antibody - SAF 84	Anti-PrP Ab raised against a preparation of SAF (scrapie associated fibrils) from infected hamster brain	SAF 84	IHC, WB
A03209	Prion Protein Monoclonal Antibody - BAR210	Anti-PrP Ab raised against an ovine RP. Epitope in N-Ter (codons 26-34)	BAR 210	WB, EIA
A03211	Prion Protein Monoclonal Antibody - BAR 224	Anti-PrP Ab raised against an ovine RP	BAR 224	WB, IHC, EIA and FC
A03212	Prion Protein Monoclonal Antibody - 11C6	Anti-PrP Ab raised against an human RP	11C6	WB, EIA, FC
A03213	Prion Protein Monoclonal Antibody - PSha 31	Anti-PrP (PrP) Ab raised against proteinase K treated and non-denatured scrapie-associated fibrils from Syrian hamster infected brain (263K)	Sha 31	EIA, WB
A03220	Prion Protein Monoclonal Antibody - 8G8	Anti-PrP Ab raised against the human RP	8G8	IHC

EIA: Elisa Immuno Assay
FC: Flow cytometry
ICC: Immunocytochemistry

IF: Immunofluorescence
IHC: Immunohistochemistry
IP: Immunoprecipitation
WB: Western Blot

ChIP: Chromatin Immunoprecipitation
IB on RCs: Immunoblotting on recombinant proteins

ANTIBODIES

EXCLUSIVE & UNIQUE RANGE OF MONOCLONAL ANTIBODIES

All antibodies have to be stored at -20°C – For research use only

NEURODEGENERATIVE DISEASES (2/2)				
Cat#	Designation	Antigen	Clone	Application
A03221	Prion Protein Monoclonal Antibody - 12F10	Anti-PrP Ab was raised against a human RP	12F10	EIA, WB
A03222	Prion Protein Monoclonal Antibody - BAR 221	Anti-PrP Ab raised against an ovine RP	BAR 221	WB, IHC, EIA, FC
A03223	Prion Protein Monoclonal Antibody - BAR 233	Anti-PrP Ab raised against an ovine RP	BAR 233	WB, IHC, EIA, FC
A03224	Prion Protein Monoclonal Antibody - BAR 236	Anti-PrP Ab raised against an ovine RP	BAR 236	WB, IHC, EIA, FC
A03225	Prion Protein Monoclonal Antibody - 2G11	Anti-PrP Ab raised against a synthetic peptide (146-182) of the ovine PrP peptide	2G11	IHC
EPIGENETICS (1/2)				
Cat#	Designation	Antigen	Clone	Application
G01045	GCN5 Monoclonal Antibody	Synthetic peptide coupled to ovalbumin	2C11	EIA, WB, IF, IP
G01046	Heterochromatin Protein 1α (HP-1 α) Monoclonal Antibody	Recombinant mouse HP1α0	2G9	EIA, WB, IP, IHC, IF
G01047	Heterochromatin Protein 1α (HP-1 α) Monoclonal Antibody	Recombinant mouse HP1α	1H5	EIA, IHC, IF, ChIP, WB
G01048	Heterochromatin Protein 1β (HP-1 β) Monoclonal Antibody	Recombinant mouse HP1β	1A9	EIA, WB, IHC, IF, IP
G01049	Heterochromatin Protein 1γ (HP-1γ) Monoclonal Antibody	Recombinant mouse HP1γ	1G6	EIA, WB, IHC, IF, IP
G01050	Histone H2b Monoclonal Antibody	Ovalbumin conjugated synthetic peptide	2A8	EIA, WB, IP
G01051	Histone H3 Monoclonal Antibody	Ovalbumin conjugated synthetic peptide (RKSTGG-KAPRKQC) corresponding to aa 8-19 of Histone H3. This sequence is conserved in a wide range of species	3E1	EIA, WB, IP, IF
G01052	Histone H3 (dimethyl-Lys9) Monoclonal Antibody	Ovalbumin conjugated synthetic peptide (TAR[dimethyl-K]STGGKAPRP) corresponding to aa 6-17 of Histone H3. This sequence is conserved in a wide range of species	2A12	EIA, WB, IF, IP

EIA: Elisa Immuno Assay
FC: Flow cytometry
ICC: Immunocytochemistry

IF: Immunofluorescence
IHC: Immunohistochemistry
IP: Immunoprecipitation
WB: Western Blot

ChIP: Chromatin Immunoprecipitation
IB on RCs: Immunoblotting on recombinant proteins

ANTIBODIES

EXCLUSIVE & UNIQUE RANGE OF MONOCLONAL ANTIBODIES

All antibodies have to be stored at -20°C – For research use only

EPIGENETICS (2/2)				
Cat#	Designation	Antigen	Clone	Application
G01053	Histone H3 (Phospho-Ser10) Monoclonal Antibody	Ovalbumin conjugated synthetic peptide (ARK[phospho-S]TGGKAPRKQLC) corresponding to aa 7-20 of Histone H3 (17 kDa). This sequence is conserved in a wide range of species	4C8	EIA, WB, IF, IP, IHC
G01054	Histone H3 dimethyl (K14) Monoclonal Antibody	Ovalbumin conjugated synthetic peptide: TARKSTGG[dimethyl-K] APR-© corresponding to aa 6-17 of Histone H3. This sequence is conserved in a wide range of species	2B10	EIA, WB, IP
G01055	Histone H3 Dimethyl (K9)-Phospho (S10) Monoclonal Antibody	Ovalbumin conjugated synthetic peptide: AR[dimethyl-K][phospho-S]TGGKAPRKQL-(C) corresponding to aa 7-20 of Histone H3 (17 kDa). This sequence is conserved in a wide range of species	2C5	EIA, WB, IF, IP
G01056	Histone H3 Dimethyl (K)-Phospho (S) Monoclonal Antibody	Ovalbumin conjugated synthetic peptide ASGSSRSKS[dimethyl-K]DRKYTL(C) corresponding to aa 180-195 of human TAF10. The generated 51TA2H12 clone recognizes S10- or S28-phosphorylated histone H3, but only when doubly modified with H3K9me2 or H3K27me2	2H12	EIA, WB, IF, IP
G01057	Histone H4 Monoclonal Antibody	Synthetic peptide: MSGRGKGGKGLGKGGAK-RHRKVLR-(C) corresponding to aa 1 to 24 of human histone H4. This sequence is conserved in a wide range of species	4G8	EIA, WB, IP
G01058	Histone H4 acetylated Monoclonal Antibody	Synthetic peptide: MSGRG(acetyl-K)GG(acetyl-K)GLG(acetyl-K)GGA (acetyl-K)RHRKVLR-(C) corresponding to aa 1 to 24 of human histone H4. This sequence is conserved in a wide range of species	2C2	EIA, WB, IP, IF
G01059	Histone H4 acetylated (K12) Monoclonal Antibody	Synthetic peptide: MSGRG(acetyl-K)GG(acetyl-K)GLG(acetyl-K)GGA (acetyl-K)RHRKVLR-(C) corresponding to aa 1 to 24 of human Histone H4. This sequence is conserved in a wide range of species	4C10	EIA, WB, IP
G01060	Histone H4 acetylated (K5 or K12) Monoclonal Antibody	Synthetic peptide: MSGRG(acetyl-K)GG(acetyl-K)GLG(acetyl-K)GGA (acetyl-K)RHRKVLR-(C) corresponding to aa 1 to 24 of human histone H4. This sequence is conserved in a wide range of species	3E7	EIA, WB, IP
G01061	Prion Protein Monoclonal Antibody BAR210	Synthetic peptide: MSGRG(acetyl-K)GG(acetyl-K)GLG(acetyl-K)GGA(acetyl-K)RHRKVLR-(C) corresponding to aa 1 to 24 of human histone H4. This sequence is conserved in a wide range of species	2E3	EIA, WB, IP
G01062	SAP130 Monoclonal Antibody	Synthetic peptide coupled to Ovalbumin	1B10	EIA, WB, IF
G01063	SUMO1 (Small ubiquitin-related modifier 1) Monoclonal Antibody	Ovalbumin conjugated Synthetic peptide	1C6	EIA, WB

EIA: Elisa Immuno Assay
FC: Flow cytometry
ICC: Immunocytochemistry

IF: Immunofluorescence
IHC: Immunohistochemistry
IP: Immunoprecipitation
WB: Western Blot

ChIP: Chromatin Immunoprecipitation
IB on RCs: Immunoblotting on recombinant proteins

ANTIBODIES

EXCLUSIVE & UNIQUE RANGE OF MONOCLONAL ANTIBODIES

All antibodies have to be stored at -20°C – For research use only

DNA REPAIR				
Cat#	Designation	Antigen	Clone	Application
G01066	AID (Activation induced cytidine deaminase) Monoclonal Antibody	Synthetic peptide coupled to Ovalbumin	2E11	EIA, WB, IF, IP
G01067	TDG (Thymine DNA glycosylase) Monoclonal Antibody	Recombinant mouse TDG protein	1F5	EIA, WB, IP, ICC
G01068	XPA (Xeroderma pigmentosum group A protein) Monoclonal Antibody	Synthetic peptide	1E11	EIA, WB, IP, ICC
G01069	XPB (Xeroderma pigmentosum group B) Monoclonal Antibody	Recombinant human TFIIHp89/XPB protein	1B3	EIA, WB, IP, ICC, IHC, ChIP
G01070	XPC (Xeroderma pigmentosum group C) Monoclonal Antibody	Synthetic peptide	2B12	EIA, WB, ICC
G01071	XPC (Xeroderma pigmentosum group C) Monoclonal Antibody	Synthetic peptide	2H1	EIA, WB, ICC
G01072	XPD (Xeroderma pigmentosum group D) Monoclonal Antibody	Synthetic peptide	2F6	EIA, WB, IP, ICC
G01073	XPG (Xeroderma pigmentosum group G) Monoclonal Antibody	Synthetic peptide	1B5	EIA, WB, IP, ICC
G01106	H2AX Phospho-Ser 139 (1H2) Monoclonal Antibody	H2AX Phospho-Ser 139	1H2	WB, ICC

EIA: Elisa Immuno Assay
FC: Flow cytometry
ICC: Immunocytochemistry

IF: Immunofluorescence
IHC: Immunohistochemistry
IP: Immunoprecipitation
WB: Western Blot

ChIP: Chromatin Immunoprecipitation
IB on RCs: Immunoblotting on recombinant proteins

ANTIBODIES

EXCLUSIVE & UNIQUE RANGE OF MONOCLONAL ANTIBODIES

All antibodies have to be stored at -20°C – For research use only

TRANSCRIPTION FACTORS (1/3)				
Cat#	Designation	Antigen	Clone	Application
G01001	ATF7 Transcription Factor Monoclonal Antibody	Recombinant human ATF7 protein	2F10	EIA, WB, IF, IP, gel supershift
G01002	CRABP I (Cellular retinoic acid binding protein I) Monoclonal Antibody	Synthetic peptide	10F5	EIA, WB, ICC
G01003	CRABP II (Cellular retinoic acid binding protein II) Monoclonal Antibody	RP corresponding to full length human CRABP II	3B3	EIA, WB, ICC, IHC
G01004	CRABP II (Cellular retinoic acid binding protein II) Monoclonal Antibody	Synthetic peptide	4C9	EIA, WB, IF, IP
G01005	DAX-1 (NROB1) Monoclonal Antibody	Synthetic peptide	2F4	EIA, WB, IP, ICC, IHC
G01006	DAX-1 (NROB1) Monoclonal Antibody	Synthetic peptide	3E5	EIA, WB, IP, ICC, IHC
G01007	Estrogen Receptor α & β (C region) Monoclonal Antibody	Recombinant human ER β full length protein	1F5	EIA, WB (natural and RCs), IF
G01008	Estrogen receptor α (B region) Monoclonal Antibody	Synthetic peptide corresponding to amino acids 151-165 of human ER α .	B10	IHC, ICC, EIA, WB
G01009	Estrogen receptor α (F region) Monoclonal Antibody	Synthetic peptide corresponding to amino acids 578-595 of human ER α .	F3	EIA, WB, IP, ICC, IP, Gel shift, Not suitable for IHC, ChIP-seq.
G01010	Estrogen receptor β (B region) Monoclonal Antibody	Synthetic peptide coupled to ovalbumin	2H9	EIA, WB, IF
G01011	Estrogen receptor β (D region) Monoclonal Antibody	Synthetic peptide coupled to ovalbumin	2B5	EIA, WB, IF
G01012	Estrogen receptor β (F region) Monoclonal Antibody	Synthetic peptide coupled to ovalbumin	2D7	EIA, WB, IF, IHC
G01013	ETS1 (C-terminal region) Monoclonal Antibody	Synthetic peptide coupled to ovalbumin	ET-1C10	EIA, WB, IF
G01014	ETS1 (DBD) Monoclonal Antibody	Synthetic peptide coupled to ovalbumin	ET-7F2	EIA, WB, IF
G01015	Gal-4 (DNA Binding domain) Monoclonal Antibody	Gal 4 DBD fusion protein	GV10	EIA, IB on RCs, ICC, Transcription assays, IP

EIA: Elisa Immuno Assay
FC: Flow cytometry
ICC: Immunocytochemistry

IF: Immunofluorescence
IHC: Immunohistochemistry
IP: Immunoprecipitation
WB: Western Blot

ChIP: Chromatin Immunoprecipitation
IB on RCs: Immunoblotting on recombinant proteins

ANTIBODIES

EXCLUSIVE & UNIQUE RANGE OF MONOCLONAL ANTIBODIES

All antibodies have to be stored at -20°C – For research use only

TRANSCRIPTION FACTORS (2/3)				
Cat#	Designation	Antigen	Clone	Application
G01016	Gal-4 (DNA Binding domain) Monoclonal Antibody	Gal 4 DBD fusion protein	GV5	EIA, IB on RCs, ICC, Transcription assays, IP
G01017	Gal-4 (DNA Binding domain) Monoclonal Antibody	peptide of Gal 4 DBD coupled to ovalbumin	GV2	EIA, IB, ICC, Transcription assays, Not suitable for IP
G01018	Gal-4 (DNA Binding domain) Monoclonal Antibody	Gal 4 DBD fusion protein	GV3	EIA, IB, ICC, IP, Transcription assays
G01019	MAT1-p32 / MNAT1 Monoclonal Antibody	Synthetic peptide	1G6	EIA, WB, ICC
G01020	MAT1-p32 / MNAT1 Monoclonal Antibody	Synthetic peptide	2D3	EIA, WB, ICC
G01021	NCoR Monoclonal Antibody	Recombinant human N-CoR protein	1D10	EIA, WB, IF
G01022	PPAR α Monoclonal Antibody	Synthetic peptide	2B2	EIA, WB, ICC, ChIP
G01023	PPAR β Monoclonal Antibody	Synthetic peptide	2H12	EIA, WB, ICC
G01024	PPAR γ 1/ γ 2 Monoclonal Antibody	Synthetic peptide coupled to ovalbumin	1H4	EIA, WB, IF
G01025	PPAR γ 2 (Phospho-S112) Monoclonal Antibody	Phosphorylated (serine 112) synthetic peptide coupled to ovalbumin: aa 107-121 of human PPAR γ 2, identical to PPAR γ 1 (KVEPA[phospho]PPYYSEKTC). No homology to PPAR α and PPAR β	1F5	EIA, WB, IF
G01026	PPAR γ 2 region AB Monoclonal Antibody	Synthetic peptide coupled to ovalbumin	2F5	EIA, WB, IF
G01027	PPAR γ 1, 2 Monoclonal Antibody	Synthetic peptide coupled to ovalbumin	4A4	EIA, WB, IF
G01028	Progesterone receptor Monoclonal Antibody		6A	ICC, IHC, EIA, WB
G01029	RAR α Monoclonal Antibody	RP	9A6	EIA, WB, ICC, IP, Gel shift
G01030	RAR β Monoclonal Antibody	RP	10B2	EIA, WB, ICC, IP, Gel shift
G01031	RAR γ Monoclonal Antibody	Synthetic peptide	2C5	EIA, WB, ICC, IP, Gel shift

EIA: Elisa Immuno Assay
FC: Flow cytometry
ICC: Immunocytochemistry

IF: Immunofluorescence
IHC: Immunohistochemistry
IP: Immunoprecipitation
WB: Western Blot

ChIP: Chromatin Immunoprecipitation
IB on RCs: Immunoblotting on recombinant proteins

ANTIBODIES

EXCLUSIVE & UNIQUE RANGE OF MONOCLONAL ANTIBODIES

All antibodies have to be stored at -20°C – For research use only

TRANSCRIPTION FACTORS (3/3)				
Cat#	Designation	Antigen	Clone	Application
G01032	RAR γ Monoclonal Antibody	Synthetic peptide	7A11	EIA, WB, IF, IP, gel supershift
G01033	RNA Polymerase I Monoclonal Antibody	Synthetic peptide	2D3	EIA, WB, ICC, IP, Gel shift
G01034	RXR α (Retinoid X receptor α) Monoclonal Antibody	RP, epitope corresponding to DE-region of mouse RXR α	3A2	EIA, WB, ICC, IHC, IP, Gel shift
G01035	RXR α (Retinoid X receptor α) Monoclonal Antibody	RP, epitope corresponding to DE-region of mouse RXR α	1D12	EIA, Gel shift
G01036	RXR β (Retinoid X receptor β) Monoclonal Antibody	Synthetic peptide	2E1	EIA, WB, ICC, Gel shift
G01037	RXR γ (Retinoid X receptor γ) Monoclonal Antibody	Synthetic peptide	2D3	EIA, WB, ICC, Gel shift
G01038	SMRT Monoclonal Antibody	Recombinant human SMRT protein	1E7	EIA, WB, IF
G01039	Snail Monoclonal Antibody	Recombinant drosophila snail full length protein	5G6	EIA, WB, ICC
G01040	Snail Monoclonal Antibody	Recombinant drosophila snail protein	5H6	EIA, WB, ICC
G01041	TRAP220 Monoclonal Antibody	Synthetic peptide	1A10	EIA, WB, IP, IF
G01042	TRRAP Monoclonal Antibody	Synthetic peptide coupled to Ovalbumin	1B3	EIA, WB, IF, IP, Chromatin IP
G01043	TRRAP Monoclonal Antibody	Synthetic peptide coupled to Ovalbumin	2D5	EIA, WB, IF, IP, Chromatin IP
G01044	XNP / ATR-X Monoclonal Antibody	Recombinant human XNP / ATR-X protein	2H12	EIA, WB, IF, IP

EIA: Elisa Immuno Assay
FC: Flow cytometry
ICC: Immunocytochemistry

IF: Immunofluorescence
IHC: Immunohistochemistry
IP: Immunoprecipitation
WB: Western Blot

ChIP: Chromatin Immunoprecipitation
IB on RCs: Immunoblotting
on recombinant proteins

ANTIBODIES

EXCLUSIVE & UNIQUE RANGE OF MONOCLONAL ANTIBODIES

All antibodies have to be stored at -20°C – For research use only

TRANSCRIPTION FACTORS RELATED (1/2)				
Cat#	Designation	Antigen	Clone	Application
G01074	TAF10 Monoclonal Antibody	Synthetic peptide coupled to ovalbumin	2B11	EIA, WB, ICF, IP
G01075	TAF10 Monoclonal Antibody		1H8	
G01076	TAF10 Monoclonal Antibody	Full length human TAFII30 as a fusion protein	2F4	EIA, WB, ICF, IP
G01077	TAF11 Monoclonal Antibody	Recombinant human TAF11 protein	2B4	EIA, WB, IP, IF
G01078	TAF12 (formerly TAFII20) Monoclonal Antibody	Recombinant human TAF12 protein	2A1	EIA, WB, IP, IF
G01079	TAF13 (formerly TAFII18) Monoclonal Antibody	Recombinant human TAF13 protein	3C12	EIA, WB, ICC
G01080	TAF3 (formerly TAFII140) Monoclonal Antibody	Synthetic peptide	2F5	EIA, WB, IP, ICC
G01081	TAF3 (formerly TAFII140) Monoclonal Antibody		1E5	
G01082	TAF4 (formerly TAFII135) Monoclonal Antibody	Synthetic peptide	2B9	EIA, WB, IP, IF
G01083	TAF4 (formerly TAFII135) Monoclonal Antibody	Recombinant TAF4 protein	1B12	EIA, WB, IP, ICC
G01084	TAF5 Monoclonal Antibody	Synthetic peptide coupled to ovalbumin	1C2	EIA, WB, ICF, IP
G01085	TAF5 Monoclonal Antibody	Synthetic peptide coupled to ovalbumin	2D2	EIA, WB, ICF, IP
G01086	TAF6 Monoclonal Antibody	Synthetic peptide	2G7	EIA, WB, ICF
G01087	TAF7 (formerly TAFII55) Monoclonal Antibody	Recombinant human TAF7 protein	2C7	EIA, WB, IP, ICC
G01088	TAF7L Monoclonal Antibody	Synthetic peptide	2D5	EIA, WB, ICC
G01089	TAFII 68 Monoclonal Antibody	Synthetic peptide coupled to ovalbumin	2B11	EIA, WB, ICF, IP
G01090	TAFII 68 Monoclonal Antibody	The RNA-binding region (RNP) of human TAFII68 as a GST-fusion protein	2B10	EIA, WB, ICF, IP

EIA: Elisa Immuno Assay
FC: Flow cytometry
ICC: Immunocytochemistry

IF: Immunofluorescence
IHC: Immunohistochemistry
IP: Immunoprecipitation
WB: Western Blot

ChIP: Chromatin Immunoprecipitation
IB on RCs: Immunoblotting
on recombinant proteins

ANTIBODIES

EXCLUSIVE & UNIQUE RANGE OF MONOCLONAL ANTIBODIES

All antibodies have to be stored at -20°C – For research use only

TRANSCRIPTION FACTORS RELATED (2/2)				
Cat#	Designation	Antigen	Clone	Application
G01091	TAFII 68 Monoclonal Antibody	Synthetic peptide	1B11	EIA, WB, ICF, IP
G01092	TBP Monoclonal Antibody		3G3	
G01093	TBP Monoclonal Antibody	Full length recombinant human TBP	2C1	EIA, WB, ICF, IP and IP-ed complexes
G01094	TFF1 (trefoil factor 1 or pS2 protein) Monoclonal Antibody	Synthetic peptide	3D5	EIA, WB, ICC, IHC
G01095	TFIIH p34 (TFIIH basal transcription factor p34) Monoclonal Antibody	Recombinant human TFIIHp34	2B1	EIA, WB, IP, ICC
G01096	TFIIH p44 Monoclonal Antibody	Synthetic peptide	1H5	EIA, WB, IP, ICC
G01097	TFIIH p52 (TFIIH basal transcription factor p52) Monoclonal Antibody	Synthetic peptide	1D11	EIA, WB, IP, ICC
G01098	TFIIH p62 (TFIIH basal transcription factor p62) Monoclonal Antibody	Recombinant human TFIIHp62	3C9	EIA, WB, IP, ICC
G01099	TIF1 α Monoclonal Antibody	RP	1E8	EIA, WB, IF
G01100	TIF1 β Monoclonal Antibody	Recombinant mouse TIF1 β as a fusion protein	1A9	EIA, WB, IF, IP
G01101	TIF1 γ Monoclonal Antibody	Synthetic peptide	3E9	EIA, WB, ICC
G01102	TIF1 δ (Transcriptional intermediary factor 1d) Monoclonal Antibody	Synthetic peptide coupled to ovalbumin	1A8	EIA, WB, ICC, IHC
G01103	TIF2 Monoclonal Antibody		3E9	
G01104	TIF2 Monoclonal Antibody	Recombinant human TIF2	3C11	EIA, WB, IF, ChIP
G01105	TLF (TBP like factor) Monoclonal Antibody	Recombinant TLF protein	2A1	EIA, WB, ICC

EIA: Elisa Immuno Assay
FC: Flow cytometry
ICC: Immunocytochemistry

IF: Immunofluorescence
IHC: Immunohistochemistry
IP: Immunoprecipitation
WB: Western Blot

ChIP: Chromatin Immunoprecipitation
IB on RCs: Immunoblotting on recombinant proteins

ANTIBODIES

EXCLUSIVE & UNIQUE RANGE OF MONOCLONAL ANTIBODIES

All antibodies have to be stored at -20°C – For research use only

MISCELLANEOUS				
Cat#	Designation	Antigen	Clone	Application
A03081	Substance P Monoclonal Antibody	Substance P-BSA	SP14	EIA
A03481	CGRP (human/rat) Monoclonal Antibody	Rat CGRP α -KLH	82	EIA
A03483	CGRP (human/rat) Monoclonal Antibody	Rat CGRP α -KLH	72	EIA
A03540	Interleukin 1 α (human) Monoclonal Antibody	Human IL 1 α Mouse	185	EIA
A03541	Interleukin 1 β (human) Monoclonal Antibody	Human IL 1 β Mouse	79	EIA
A03542	Interleukin 2 (human) Monoclonal Antibody	Human IL 2 Mouse	78	EIA
A03543	Interleukin 4 (human) Monoclonal Antibody	Human IL 4 Mouse	38	EIA
A03544	Interleukin 1 α (human) Monoclonal Antibody	Human IL 1 α Mouse	29	EIA
A03545	Interleukin 1 β (human) Monoclonal Antibody	Synthetic Human IL 1 β Mouse	36	EIA
A03547	Interleukin 2 (human) Monoclonal Antibody	Human IL 2 Mouse	39	EIA
A03548	Interleukin 4 (human) Monoclonal Antibody	Human IL 4 Mouse	3	EIA
A03560	Endothelin (human) Monoclonal Antibody	Human Endothelin-BSA	18	EIA
A03561	Endothelin (human) Monoclonal Antibody	Human Endothelin-BSA	4	EIA
A03880	TAF7 (formerly TAFII55) Monoclonal Antibody	Recombinant human TAF7 protein	131	EIA
A03890	TAF7L Monoclonal Antibody	Synthetic peptide	MAB31	EIA
G01064	TAFII 68 Monoclonal Antibody	Synthetic peptide coupled to ovalbumin	2H7	EIA, WB, IP, IF
G01065	TAFII 68 Monoclonal Antibody	The RNA-binding region (RNP) of human TAFII68 as a GST-fusion protein	1D12	EIA, WB, ICC, IP

ADDITIONAL RANGES

Bertin Bioreagent also proposes polyclonal antibodies for cytokines, drugs, gamma globulin, hormones, leukotrienes, nucleosides, peptides, prostaglandins & thromboxanes.

EIA: Elisa Immuno Assay
FC: Flow cytometry
ICC: Immunocytochemistry

IF: Immunofluorescence
IHC: Immunohistochemistry
IP: Immunoprecipitation
WB: Western Blot

ChIP: Chromatin Immunoprecipitation
IB on RCs: Immunoblotting on recombinant proteins

Bertin health & life sciences & Bertin Bioreagent: Comprehensive Life Sciences Solutions



AIR
SAMPLING

SAMPLE
PREPARATION

ASSAY
KITS

TECHNOLOGY
ON-DEMAND

OPTIMIZED SOLUTIONS

- EFFICIENT PRODUCTS
- INNOVATIVE SOLUTIONS
- EXPERTISES: ELECTROMECHANICS, OPTICS, SOFTWARES...

TECHNOLOGY ON DEMAND

- PROJECT MANAGEMENT
- HARDWARE & SOFTWARE DEVELOPMENT
- BIOANALYSIS
- ELECTROMECHANICS, OPTICS



Discover our solutions

HEAD OFFICE

Bertin Technologies SAS
Parc d'activités du Pas du Lac
10 bis, avenue Ampère
78 180 Montigny-le-Bretonneux
FRANCE

US OFFICE

Bertin Corp
11630-11634 Boiling Brook Parkway,
Rockville MD 20852, United States

ORDER

+33 (0)1 39 30 60 36
order-life@bertin.group
order@bertin-corp.com (US)

WEBSITE

www.bertin-technologies.com
www.bertin-bioreagent.com

SCIENTIFIC SUPPORT

tech@bertin-bioreagent.com