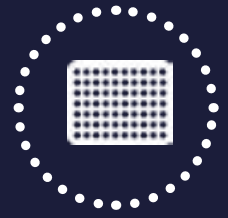


# Diabetes



## Assay kits for metabolic syndrome research

- Large range of biomarkers
- Ready-to-use assay kits
- Key player in Ghrelin assay kits

FROM METABOLIC SYNDROME TO CACHEXIA:  
WHAT'S NEW ABOUT METABOLIC BIOMARKERS ?

By Odile Viltart and Virginie Tolle, PhD - INSERM UMR894 – Centre de Psychiatrie et Neurosciences, Paris, FRANCE

Metabolic syndrome (MetS) is the constellation of risks namely abdominal obesity, insulin-resistance, type 2 diabetes, dyslipidemia and arterial hypertension. In the late 90's the World Health Organisation (WHO) gave a definition of the MetS to better understand mechanism and therefore tempt to find appropriate treatment. Starting with that first

History of metabolic syndrome

In the early 1920s, the Canadian Surgeon Frederick Banting<sup>1</sup> extracted a compound they named insulin from the islets of Langerhans in the pancreas. When injected into diabetic dogs, the compound decreased the levels of sugar in the dogs' blood and urine. The discovery, coupled with the purification of insulin, helped transform childhood diabetes from a fatal disease to a chronic illness.

By the 1930s, it had become common to classify people with diabetes according to how they reacted to an injection of insulin: insulin-sensitive or type 1 diabetes and insulin-insensitive or type 2 diabetes. Type 2 diabetes accounts for at least 90% of all

Biomarkers<sup>1bis</sup> for the diagnosis and prognosis of nutritional or metabolic disorders

Worldwide, over 70 million people suffer from eating disorders.

**Obesity<sup>2</sup> and diabetes** are amongst the greatest public health issues for this century. Indeed, over the last 30 years, obesity has more than doubled, achieving **1.5 billion persons**. It does affect without any distinction all the population (children, adult, elderly people) and all socioeconomic status. Obesity is a complex condition which poses a major risk for serious diet-related, non-communicable diseases, including type 2 diabetes.

In the past 20 years, the rates of obesity have tripled in developing countries that have been adopting a Western lifestyle involving decreased physical activity and overconsumption of cheap, energy-dense food.

About 18 million people die every year from cardiovascular disease, for which diabetes and

definition (initial one) of the metabolic syndrome a range of alternative definitions was suggested. The most widely accepted definition was formulated by EGIR (European Group for the Study of Insulin Resistance) and NCEP (USA National Cholesterol Education Panel).

the cases of diabetes and refers to adults over 40. This type of diabetes is characterised by insulin resistance, a phenomenon by which an individual's body issues have a diminished response to insulin, causing the body to produce larger quantities of insulin to maintain normal blood glucose level. In the 1980s, insulin resistance had become a major field of research, as physicians began to understand it not only has preconditional of type 2 diabetes, but as also associated with pathological cluster such as obesity, heart disease, stroke and environment that can be named MetS.

hypertension are major predisposing factors. Today, more than **1.1 billion adults** worldwide are overweight, and **312 million of them are obese**. The increase in the prevalence of type 2 diabetes is closely linked to the upsurge in obesity. About 90% of type 2 diabetes is attributable to excess weight. Consequently, diabetes is rapidly emerging as a global health care problem that threatens to reach pandemic levels by 2030; the number of people with diabetes worldwide is projected to increase from 171 million in 2000 to 366 million by 2030.

**Anorexia nervosa (AN)<sup>3</sup>**. Amongst eating disorders, Anorexia Nervosa (AN) is characterized by a chronic undernutrition state and a body mass index below 17<sup>4</sup>. It affects 1-4% of women in the United States and is the leading cause of death among adolescents in Europe.

1 **Frederick Banting** is the Nobel Prize in Physiology or Medicine 1923  
1bis **Biomarker** refers to a measurable indicator of some biological state or condition. They can be measured as an objective indicator of a physiological or pathological state or responses to a therapeutic intervention. Biomarkers may be used for personalized therapeutic either as diagnosis, predictive (likely benefit from a treatment) or prognostic (likely outcome of a specific treatment) tool.  
2 **Obesity** is characterized by an excess fat mass due to an imbalance between energy intake and energy expenditure. Beyond nutrition and genetics, environmental factors may be involved in the development and installation of obesity. Obesity is often associated with increased risk of developing type 2 diabetes, cardiovascular problems and certain cancers.

3 **Anorexia nervosa** is an eating disorder characterized by a low body weight, fear of gaining weight and undernutrition resulting from self-imposed starvation. There is evidence for biological, psychological, developmental, and sociocultural risk factors, but the exact cause of eating disorders is unknown (Rikani et al.).  
4 **Body mass index** (BMI = calculated as body mass in kg divided by the length in m<sup>2</sup>) is used as an indicator of the level of severity in patients with overweight or anorexia nervosa. It corresponds to Severity in overweight: 1) overweight (25<BMI<30), 2) Moderate (30<BMI<35), 3) Severe (35<BMI<40), 4) Massive (BMI>40) (Data INSERM) - Severity in anorexia nervosa 1) Mild (BMI>17, 2) Moderate (16<BMI<17), 3) Severe (15<BMI<16), 4) Extreme (BMI<15) (Peat et al.)

Globally, AN affects about two million people (Global burden of disease study 2013). It is estimated to occur in 0.9% to 4.3% of women and 0.2% to 0.3% of men in Western countries at some point in their life (Smink et al. 2012). 30 to 40% of patients do not recover optimally even after 10 to 13 years of follow-up (Rigaud et al., 2011).

The exponential increase of nutritional and metabolic diseases induced by a disequilibrium between the energy input and expenditure, i.e. too much, too less, or energy expenditure (such as obesity or anorexia) generates care expenses that become a real health societal problem. Indeed, such an important cost can be explained by chronicity, severity and usually a lack of appropriate treatment. It would be reduced by an early diagnosis of the disease using relevant **biomarkers** or **biological markers** that might lead to begin the treatment at an early stage of the disorder. Thus, it is necessary to find pertinent biological markers, **easy to measure**, to evaluate the early phase and the different stages as well as the severity of the disease to propose to the patient pertinent-personalized therapeutic strategies.

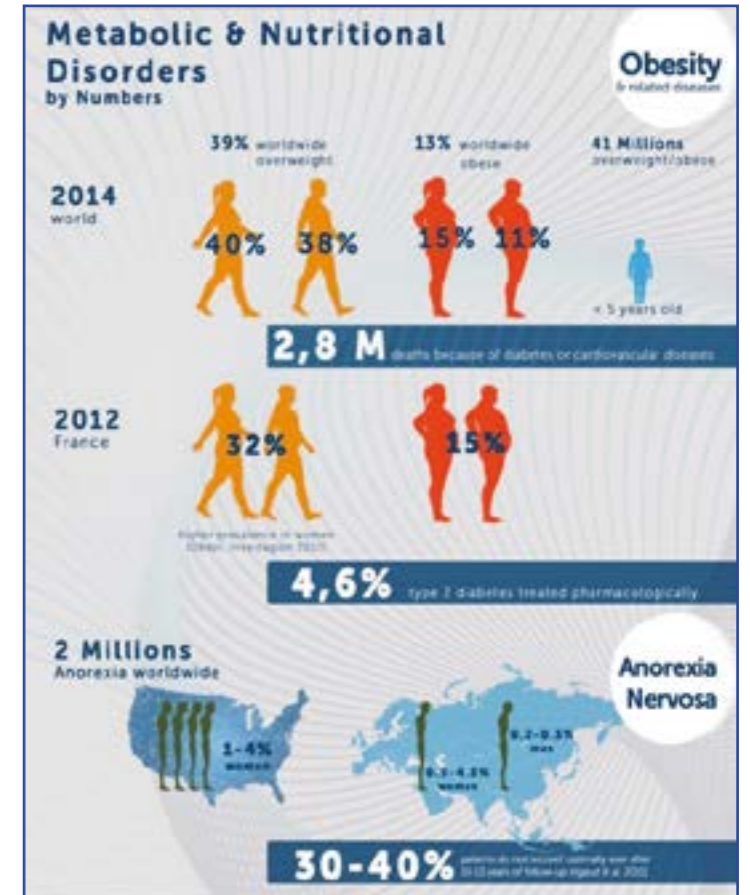
With the identification these past 20 years of new regulators of energy homeostasis in the brain or peripheral organs, potential new **biomarkers for metabolic or nutritional disorders** are proposed.

A special focus is made on hormones produced in the adipose tissue or gastrointestinal tract since they are secreted in the blood and signal to the brain about the nutritional or metabolic status. The absence of very **specific** and **sensitive immunoassays** is considered

Which biomarkers?

There is an urgent need to identify specific biological markers.

To date, there is no effective pharmacological treatment that can guarantee a complete nutritional recovery in patients suffering from these diseases. In order to develop new therapeutic strategies and determine new candidate strategies for treatment, there is an urgent need to identify specific biological markers that could be involved in the maintenance and/or worsening of the disease. These past years, the scientific community has identified specific biomarkers that are dysregulated in the overnutrition or undernutrition states and can also reflect the type (anorexia nervosa versus obesity) or subtype (bingeing-purging versus restrictive AN) of the disease (Germain et al., 2010; Germain et al., 2016) as well as its severity or duration (Terra et al., 2013).



to be a limitation to the appropriate measurement of these biomarkers. However, these past years, new technological developments and their effects in immunoassays alleviate such a downside.

Past and current research focuses on investigating endocrine biomarkers produced by the adipose tissue or gastrointestinal tract, such as **leptin** (Legroux-Gérot et al., 2009; Jamar et al. 2016), **adiponectin** (Terra et al., 2013; Lopez-Jaramillo et al., 2014), **ghrelin** and **obestatin** (Gorwood et al., 2016; Germain et al., 2010; Kuppens et al., 2015) or **26-RFa** (Galusca et al., 2012) in AN and obesity.

To better understand the mechanisms involved in the process of malnutrition/renutrition, identification of biomarkers predictive of successful refeeding in patients or animal models mimicking certain aspects of the disease is needed.

Beyond AN, applications for other diseases associated with undernutrition, such as cachexia or malnutrition worldwide. Ghrelin and leptin, as well as other adipocytokines such as resistin or adiponectin, are also investigated as potential biomarkers to diagnose cachexia and predict survival in cancer patients (Mondello et al., 2014, Kerem et al., 2008).

**Obesity – anorexia/cachexia: two faces of a same neurobiological circuit?**

The actions of these biomarkers on **homeostatic** and **non-homeostatic neuronal circuits** regulating eating behaviors begin to be well described and better understood (Morton et al., 2014, Fig. 1- page 5). Peripheral hormones reach the brain through specific way of transport across the blood brain barrier (Schaeffer et al., 2013) targeting different brain areas involved in the homeostatic and non-homeostatic regulation of food intake, energy expenditure and thus body weight.

Briefly, hypothalamus and brainstem structures (*nucleus tractus solitarius*) are direct sensors of the energy and metabolic balance while the meso-cortico-limbic system (ventral tegmental area – *nucleus accumbens*) is devoted to the motivational/rewarding aspects of the food. Obesity and Anorexia Nervosa display deregulation in the synthesis and/or release of several peripheral factors that modulate central feeding centers. In particular, plasma ghrelin and leptin concentrations show opposite variations leading to the hypothesis of a key role of these hormones in the physiopathology of these diseases (from the genesis to the different outcomes inherent to such feeding disorders).

A better understanding of their evolution/kinetic during the course of the disease is essential to potentially find a pertinent therapeutic solution by

acting at different levels to reprogram a dysfunctional system. Such fundamental studies, using genetically-engineered mice (total deletion or conditional deletion of genes in specific neuronal or peripheral population) have permitted to highlight the role of gut hormones and/or central neuromediators (like dopamine and serotonin, for example). The mechanisms of action leading to a chronicisation of the disease (obesity or anorexia) remain currently poorly understood rendering urgent to perform valuable and reproducible measurements of the evolution of pertinent biomarkers during the course of the disease to better understand the mechanisms of action of these hormonal biomarkers in pathological states at both central and peripheral levels.

Bertin Technologies is now well recognized for its expertise to develop analytical tools to measure such biomarkers. Their use as either diagnostic or prognostic biomarkers in human subjects in pathological states and in parallel to follow their evolution in animal models might be essential to assess clinical vs fundamental research. In this view, Bertin Technologies offers the possibility to propose immunoassays specific for each species and to further develop specific pharmacological blockers and enhancers.

**Representation of both central structures and peripheral factors involved in the regulation of energy metabolism and food intake**

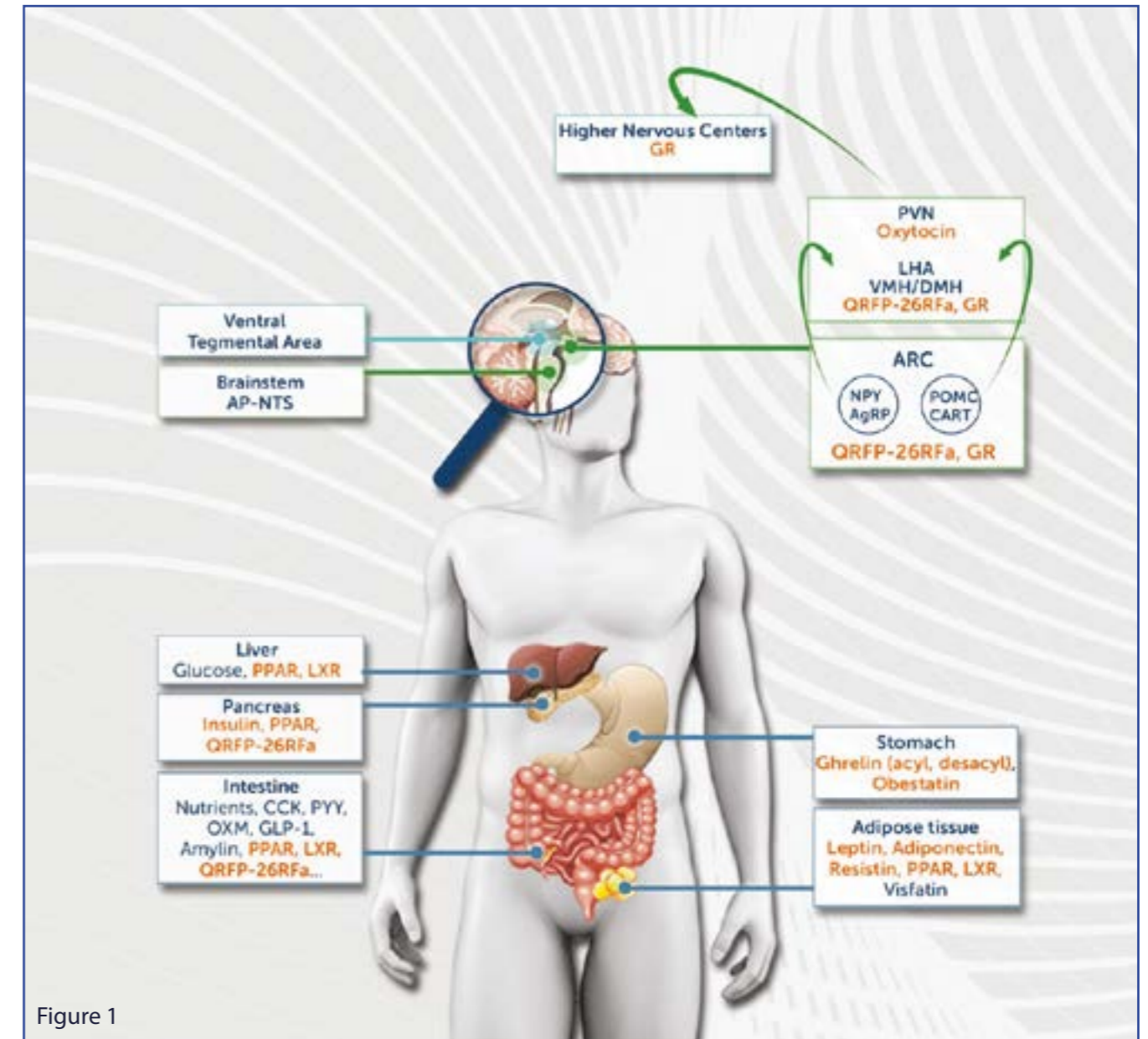


Figure 1

The brain areas involved in the homeostatic regulation of energy metabolism and food intake are depicted in green. Peripheral signals that are released in the blood access circumventricular organs such as the median eminence in order to directly target orexigenic (NPY, AgRP) and anorexigenic (POMC, CART) neuronal populations within the hypothalamic arcuate nucleus. These signals can also directly target the nucleus tractus solitarius through another circumventricular organ, the area postrema, or via the vagus nerve. The brain structures involved in the non-homeostatic regulation of food intake are depicted in turquoise. The ventral tegmental area that controls the rewarding aspects of feeding behavior contains dopaminergic neurons which express leptin and ghrelin receptors. In green/turquoise, the higher nervous centers responsible of the integration of non homeostatic and homeostatic information to drive individuals to an adapted feeding behavior.

**New biomarkers for future personalized therapeutic treatments  
Our own experience using Bertin Bioreagent kits**

These past years, our research has been focused on understanding the role of preproghrelin, a complex prohormone encoding various peptides (acyl and desacyl ghrelin, obestatin) with structural and functional heterogeneity, in the pathophysiology of eating disorders. Our aim was to evaluate the relative ratio of these peptides in undernutrition conditions in both rodents and humans. The absence of selective and reliable assays to measure all three ghrelin-derived in the same biological sample was a limitation to understand how these key gastrointestinal peptides were regulated in pathological conditions.

First, we validated **Bertin Bioreagent's** immunoassay kits by demonstrating the absence of immunoreactivity for both acyl and desacyl ghrelin in preproghrelin deficient mice (*Hassouna*

*et al.* 2014). Since immunoassays kits have been developed in multi-species, we are able to use them for explorations in different models: rat, mouse, human. Thus, we were able to assay ghrelin in both obesity (*Lacroix et al.* 2015) and undernutrition states in both animal models (*Méquinion et al.* 2015) and AN patients in collaboration with members of the interdisciplinary network on eating disorders, GIR-AFDAS-TCA ([www.anorexiéboulimie-afdas.fr](http://www.anorexiéboulimie-afdas.fr)) and CMME5 (Paris, France). Exploration of these biomarkers in preclinical and clinical studies is essential to better understand the pathophysiology of the disease. In collaboration with **Bertin Technologies**, we have worked on optimizing the conditions of sampling, treatment and storage of samples.

Such assays have several advantages:

- they are developed in multi-species, from rodent (rat and mouse) to human, which is ideal for preclinical to clinical investigations,
- they are specific for different isoforms of the same peptide (such as acyl versus desacyl ghrelin) that can have various biological effects (Delhanty et al. 2013),
- they are sensitive enough to detect small concentrations or variation ranges,
- they are reproducible and designed to recover peptides with post-translational modifications (such as acylation) with specific treatment.

**What treatment(s) for tomorrow?**

Lifestyle modification is the mainstay of prevention and treatment for metabolic syndrome and type 2 diabetes; however, it can be costly and labour-intensive. Pharmacotherapy is considered as second line of therapy in adults, but its use in children is controversial. In that framework, the use of specific **biomarkers** is fundamental to better apprehend the mechanisms that are involved in eating disorders and regulation of body weight. The future will be to use targeted and personalised therapies. Indeed, the generalisation of genetic, epigenetic, or pharmacogenetics tools will be of importance to know the ins and outs of the disorders related to food intake according to age, sex and endocrine disruptors.

The current scientific priorities include more specifically the study of (i) the interaction between genes and environment with a special focus on the role of the gut microbiota and the impact of various environmental pollutants and (ii) the dialog between the brain and the gut. Recent data obtained by the

French consortium Micro-Obes (2013)<sup>6</sup> have shown that individuals with a poor gut bacteria diversity are exposed to a higher risk to develop complications linked with an obese phenotype. Changing the composition of the daily diet was sufficient to restore a normal gut microbiota. Thus, the development of an easy test to specifically identify these "at risk" persons may help to propose an adapted and personalized treatment.

In this view, identifying biomarkers is a necessary step for achieving better diagnostics and follow evolution of diseases and efficiency of treatments. The development of new valuable preclinical models (in vivo and/or in vitro) to further assess the mechanisms and the impact of new potential treatments is fundamental to obtain substantial knowledge and answers in the field of type II diabetes, nutrition and metabolic disorders. Such data might be obtained through dedicated clinical platforms to phenotype and follow up large national cohorts.

<sup>6</sup><http://unice.fr/faculte-de-medecine/actualite/toute-actualite/doc-2014-2015/journal-nutrition-def.pdf>

**HUNGER HORMONE ASSAY KITS**

Bertin Technologies develops, manufactures and distributes its own assay kits under the Bertin Bioreagent's brand name (formerly known as SPI-Bio). We also offer you very high quality assay kits from Cayman Chemical and INDIGO Bioscience companies.

**ADIPONECTIN: THE STRATEGIC TARGET FOR METABOLIC SYNDROME**

**Adiponectin** is a 244 amino-acid protein hormone produced mainly by adipocytes of the adipose tissue. Adiponectin is a hormone mainly influencing the metabolism of saccharides and lipids, increasing the sensitivity of tissues to insulin. Its effect leads to an increased transport and utilization of glucose and free fatty acids in muscles, liver and adipose cells.

- **Adiponectin (human) ELISA kit** **Cat No: A05185**  
Recognize natural and recombinant adiponectin  
All reagents provided are ready to use  
Working range fits with physiological concentration
- **Adiponectin High Sensitivity (human) ELISA kit** **Cat No: A05186**  
Highly sensitive  
Many samples have been validated  
Small volume of sample size
- **Adiponectin (mouse) ELISA kit** **Cat No: A05187**  
41 samples in one shot  
Cross-react partly with rat adiponectin  
Supplied with internal quality control

**AFABP: A FATTY ACID TRAFFICKING ACTOR**

**Adipocyte Fatty Acid Binding Protein (AFABP)** is a 15 kDa member of the intracellular Fatty Acid Binding Protein (FABP) family. It is expressed in a tissue specific manner in differentiated adipocytes. It is a critical gene in the regulation of the biological function of these cells. According to some results, AFABP may be involved in mediating obesity-induced alterations in adipocyte gene expression.

- **A-FABP (human) ELISA kit** **Cat No: A05181**  
New marker for atherosclerosis & metabolic syndrome  
Provided with internal quality control  
Involved in cholesterol accumulation

## DIABESITY

### HUNGER HORMONE ASSAY KITS

#### GHRELIN: THE HUNGER HORMONE

**Ghrelin** gene raises to mRNA prepro-ghrelin of 117 amino acids. This precursor is processed into ghrelin, 28 amino acids (human). This endogenous peptide appears directly related to feeding behavior. Its potential therapeutic importance may also be involved in cardiovascular, gastrointestinal, muscle mass maintenance, infertility, cachexia and cancer.

Bertin Technologies offers you an exclusive range of bioanalytical tools to assay Acylated and Unacylated Ghrelin with very high sensitivity whatever their collection procedure.

Bertin Technologies has a solution, from early discovery programs using our 384-well plate format to select your GOAT inhibitor, to pre-clinical or clinical stages.

- **Large range of Ghrelin assays**

Measure acylated and unacylated ghrelin

Ubiquitous

Matrices: plasma, serum & cell culture supernatant

Cat No	Designation	Application
A05106.96 wells	Acylated Ghrelin (human) Express ELISA kit	PHMB, PMSF, Aprotinin samples
A05106.384 wells	Acylated Ghrelin (human) 384w ELISA kit	GOAT inhibitor screening
A05117.96 wells	Acylated Ghrelin (mouse, rat) Express ELISA kit	PHMB, PMSF, Aprotinin samples
A05118.96 wells	UnAcylated Ghrelin (mouse, rat) Express ELISA kit	PHMB, PMSF, Aprotinin samples
A05119.96 wells	UnAcylated Ghrelin (human) Express ELISA kit	PHMB, PMSF, Aprotinin samples
A05306.96 wells	Acylated Ghrelin (human) Easy Sampling ELISA kit	Any kind of sample
A05317.96 wells	Acylated Ghrelin (mouse, rat) Easy Sampling ELISA kit	
A05318.96 wells	UnAcylated Ghrelin (mouse, rat) Easy Sampling ELISA kit	
A05319.96 wells	UnAcylated Ghrelin (human) Easy Sampling ELISA kit	
A05320.96 wells	UnAcylated Ghrelin (dog) Easy Sampling ELISA kit	
A05321.96 wells	Acylated Ghrelin (dog) Easy Sampling ELISA Kit	
A05401.96 wells	Acylated Ghrelin (pig) ELISA kit	
A05402.96 wells	UnAcylated Ghrelin (pig) ELISA kit	PHMB, PMSF, Aprotinin samples
D31009	Sampling Tubes with PHMB	Sample preparation
A90002.1 ea	Acylated Ghrelin plasma measurement	Please contact us
A90003.1 ea	UnAcylated Ghrelin plasma measurement	

BIOR-027-DU006-A

## DIABESITY

### HUNGER HORMONE ASSAY KITS

#### INSULIN: LOWERING GLUCOSE RATE

**Insulin** is a polypeptide hormone with molecular weight of 6,000 Daltons, composed of two peptides chains jointed by two cross-linked disulphide bonds and synthesised by the beta cells of the islets of Langerhans. Its best known action is to lower the blood glucose concentration by increasing the rate at which glucose is converted into glycogen in the liver and muscles, and to fat in adipose tissue.

**Focus on hemolysis:** hemolysis interferes with the assay by degrading insulin.

To prevent hemolysis consequences, Bertin Bioreagent has an inhibitor cocktail and a procedure available

- **Insulin (mouse, rat) ELISA kit 96 wells / 480 wells**

**Cat No: A05105**

Ubiquitous

Use with hemolysed samples

Matrices: plasma & serum

- **Insulin (human) ELISA KIT**

**Cat No: A05322**

Broadest Standard Curve Range

High sensitivity

Versatile assay for all your samples

#### AFABP: A FATTY ACID TRAFFICKING ACTOR

**Leptin**, the product of the obese gene, is produced mainly in the adipose tissue, and is considered to play an important role in appetite control, fat metabolism and body weight regulation. Leptin has a dual action: it decreases the appetite and increases energy consumption. Leptin is secreted in circadian fashion with nocturnal rise in both lean and obese patients.

- **A-FABP (human) ELISA kit**

**Cat No: A05181**

- **Leptin (mouse, rat) ELISA kit**

**Cat No: A05176**

- **Leptin Receptor (human) ELISA kit**

**Cat No: A05175**

New marker for atherosclerosis & metabolic syndrome

Provided with internal quality control

Involved in cholesterol accumulation

#### GROWTH HORMONE: TRAIN HARD AND SLEEP WELL

**Growth Hormone (GH)** is a polypeptide hormone with a molecular weight of 23 K Daltons released from somatotropes of the anterior pituitary. It is regulated by several neurotransmitters and neuropeptides. Amongst other functions, it plays an essential role in regulating body growth.

- **Growth Hormone (rat) ELISA kit**

**Cat No: A05104**

Less than 1 hour bench time

Matrices: Plasma, serum & culture supernatant

Highly sensitive

#### QRFP-26RFA: INSULIN ENHANCER

**QRFP-26RFA** is a neuropeptide of 26 amino acids from the RFamides family. It is mainly produced in the hypothalamus and in some peripheral tissues like the brainstem or the lateral horns of the spinal cord. QRFP-26RFA has an action on the regulation of the high fat diet and on the lipolysis in adipocyte of obese individuals.

- **QRFP-26RFA (human) ELISA kit**

**Cat No: A05037**

Exclusive assay

New biomarker

Sensitive

BIOR-027-DU006-A

## DIABESITY

### HUNGER HORMONE ASSAY KITS

#### RESISTIN: A CREDIBLE LINK BETWEEN INSULIN RESISTANCE AND TYPE 2 DIABETES

**Resistin** is a peptide hormone belonging to the class of cysteine-rich secreted proteins which is termed the RELM family. It is described as ADSF (Adipose Tissue-Specific Secretory Factor) and FIZZ3 (Found in Inflammatory Zone).

Studies have shown that in mice, resistin impairs glucose tolerance and insulin action. It also inhibits adipogenesis in murine 3T3-L1 cells. Therefore, resistin has been proposed as an adipocyte secreted factor that is thought to link obesity and type 2 diabetes.

- **Resistin (human) ELISA kit** **Cat No: A05177**  
Matrices: human serum, plasma and culture supernatant  
Assay 41 samples in duplicate  
Incubation: 3 x 1 hour
- **Resistin (mouse) ELISA kit** **Cat No: A05178**  
Matrices: mouse serum, plasma and culture supernatant  
Assay 40 samples in duplicate  
Incubations: 2 x 1 hour | 30 minutes
- **Resistin (rat) ELISA kit** **Cat No: A05179**  
Matrices: mouse serum, plasma, and culture supernatant  
Assay 40 samples in duplicate  
Incubations: 2 x 1 hour | 30 minutes

#### OBESTATIN: SHED LIGHT ON THE DARK SIDE OF THE OBESTATIN

**Obestatin** is an amidated peptide made of 23 amino-acids with a secondary conformation in alpha-helix. Obestatin was identified as an anorexigenic peptide with an action on the food intake. First studies shown that the obestatin reduced food intake and body weight. It can be considered as an antidiabetic peptide by positively influencing glucose and lipid metabolism.

- **Obestatin (human) ELISA kit** **Cat No: A05036**
- **Obestatin (mouse, rat) ELISA kit** **Cat No: A05035**  
Less than 1 hour bench time  
Matrices: plasma, serum & culture supernatant  
Sample volume: 50 µL

## DIABESITY

### GLUCOSE METABOLISM ASSAY KITS

#### GLUCOSE: PIVOTAL SENSOR FOR MEDICAL RESEARCH

**Glucose's** metabolism is central to mammalian life. Dynamic changes in any of the steps involved in processing glucose and its derivatives contribute to a wide range of diseases. Measuring the enzymes and metabolites is pivotal to biological and medical research. Cayman offers an array of tools to make these measurements, quickly, easily, and accurately.

- **Glucose Colorimetric Assay Kit** **Cat No: 10009582**  
Simple, reproducible  
Sensitive  
Matrices: plasma, serum & urine
- **Glucose Uptake Cell-Based Assay Kit** **Cat No: 600470**  
Measure glucose uptake by cultured cells  
Convenient tool to study modulators of cellular glucose intake  
Employs 2-NBDG, a fluorescent deoxyglucose analog
- **Glucose Uptake Cell-Based Assay Kit** **Cat No: 601230**  
Real-time fluorometric measurement of extracellular acidification associated with glycolysis  
Includes control compounds to increase or decrease glycolytic rate  
Adaptable to high-throughput screening

## DIABESITY

### NUCLEAR RECEPTOR ASSAY KITS

#### PPAR: MAJOR ACTOR OF ADIPOGENESIS

**Peroxisome proliferator-activated receptors (PPARs)** play essential roles in the regulation of and expression of target genes found in the virtually all parts of the body. Three types of PPARs have been identified: alpha, beta/delta, and gamma. PPAR gamma regulates adipocyte differentiation, fatty acid storage, and glucose metabolism, and is a common target of insulin sensitizing drugs used in the treatment of diabetes.

- **Mouse PPAR $\alpha$  Reporter Assay System** **Cat No: M00111**
- **Rodent PPAR $\gamma$  Reporter Assay System** **Cat No: MR00101**
- **Mouse PPAR $\delta$  Reporter Assay System** **Cat No: M00121**  
Screening of test samples to quantify any functional activity, either agonist or antagonist  
Robust data proven, featuring excellent Z'scores & high signal-to-noise ratios  
All-inclusive kit

#### LXR: SENSORS OF CHOLESTEROL HOMEOSTASIS

**The liver X receptors (LXRs)** play an important role in the balance of cholesterol and lipid metabolism. These transcription factors control the expression of a battery of genes involved in the uptake, transport, efflux and excretion of cholesterol in a tissue-dependent manner. The two isoforms – alpha and beta – are found throughout the body, with LXR $\alpha$  tissue expression restricted to the liver, kidney, intestines, lungs, and fat tissue; LXR $\beta$  in nearly all tissues and organs.

- **Human LXR $\alpha$  Reporter Assay System** **Cat No: IB00311**
- **Human LXR $\beta$  Reporter Assay System** **Cat No: IB00302**  
Screening of test samples to quantify any functional activity, either agonist or antagonist  
Robust data proven, featuring excellent Z'scores & high signal-to-noise ratios  
All-inclusive kit

#### RXR: REGULATOR OF METABOLIC FUNCTIONS

**The Retinoid X receptors (RXRs)** regulate a plethora of genetic programs, including cell differentiation, the immune response, and lipid and glucose metabolism. Recent advances reveal that RXRs are important regulators of macrophages, key players in inflammatory and metabolic disorders.

- **Human RXR $\alpha$  Reporter Assay System** **Cat No: IB00801**
- **Human RXR $\beta$  Reporter Assay System** **Cat No: IB00811**
- **Human RXR $\gamma$  Reporter Assay System** **Cat No: IB00821**  
Screening of test samples to quantify any functional activity, either agonist or antagonist  
Robust data proven, featuring excellent Z'scores & high signal-to-noise ratios  
All-inclusive kit

#### FFAR: REGULATOR OF ENERGY METABOLISM

**Free fatty acid receptor (FFAR)** is a G protein-coupled receptor (GPCR) activated by free fatty acids (FFAs), which play important roles not only as essential nutritional components but also as signaling molecules in numerous physiological processes. A number of pharmacological and physiological studies have shown that these receptors are expressed in various tissues and are primarily involved in energy metabolism.

- **FFAR4 (GPR120) Reporter Assay Kit** **Cat No: 601200**
- **FFAR1 (GPR40) Reporter Assay Kit** **Cat No: 601190**  
Reverse transfection reporter assay to screen for FFARx agonists, antagonists, modulators  
Positive control agonist included  
Sufficient reagent to perform assays on samples collected at several time points

## DIABESITY

### OTHER KITS

#### OXYTOCIN: LOVE HORMONE TREATS DIABETES

**Oxytocin (OXT)** is a hypothalamic peptide hormone that is stored in the posterior pituitary gland. It is a classical neurohypophyseal hormone important for lactation and sexual behaviour. In light of metabolic control, OXT has been shown to induce feeding restriction and body weight lowering through acting on brain regulatory regions, in particular the hypothalamus.

- **Oxytocin ELISA Kit** **Cat No: 500440**  
Measure oxytocin in plasma  
Assay 24 samples in triplicate / 36 samples in duplicate  
Measure oxytocin levels down to 20 pg/ml

#### REACTIVE OXYGEN SPECIES: INTERCONNECTION WITH METS

**Reactive oxygen species (ROS)** contribute to the inter-relationship between metabolic syndrome and salt-sensitive hypertension, which are both caused by obesity and excess salt consumption. ROS can induce insulin resistance, which is indispensable for the progression of metabolic syndrome, and salt-sensitive hypertension stimulates ROS production, thereby promoting the development of metabolic syndrome.

- **ROS Detection Cell-Based Assay kit** **Cat No: 601290**  
Measures ROS directly in live cells  
Specificity for superoxide and hydrogen peroxide  
Includes positive control for ROS generation and a negative control for ROS scavenging

# DIABESITY

## REFERENCES – ARTICLE WRITTEN BY V. TOLLE & O. VILTART

### **Delhanty PJ, Neggers SJ, Van der Lely AJ.**

Des-acyl ghrelin: a metabolically active peptide. *Endocr Dev.* 2013;25:112-21.

### **Geiss LS, Wang J, Cheng YJ, Thompson TJ, Barker L, Li Y, Albright AL, Gregg EW.**

Prevalence and incidence trends for diagnosed diabetes among adults aged 20 to 79 years, United States, 1980-2012. *JAMA.* 2014 Sep 24;312(12):1218-26.

### **Global Burden of Disease Study 2013, Collaborators (5 June 2015).**

“Global, regional, and national incidence, prevalence, and years lived with disability for 301 acute and chronic diseases and injuries in 188 countries, 1990–2013: a systematic analysis for the Global Burden of Disease Study 2013”. *Lancet* (London, England). 386 (9995): 743–800.

### **Galusca B, Jeandel L, Germain N, Alexandre D, Leprince J, Anouar Y, Estour B, Chartrel N. (2012)**

Orexigenic neuropeptide 26RFa: new evidence for an adaptive profile of appetite regulation in anorexia nervosa. *J Clin Endocrinol Metab.* 97(6):2012-8.

### **Germain N, Galusca B, Grouselle D, Frere D, Billard S, Epelbaum J, Estour B. (2010)**

Ghrelin and obestatin circadian levels differentiate bingeing-purging from restrictive anorexia nervosa. *J Clin Endocrinol Metab.* 95(6):3057-62.

### **Germain N, Viltart O, Loyens A, Bruchet C, Nadin K, Wolowczuk I, Estour B, Galusca B.**

Interleukin-7 Plasma Levels in Human Differentiate Anorexia Nervosa, Constitutional Thinness and Healthy Obesity. *PLoS One.* 2016 Sep 9;11(9):e0161890.

### **Gorwood P, Blanchet-Collet C, Chartrel N, Duclos J, Dechelotte P, Hanachi M, Fetissov S, Godart N, Melchior JC, Ramoz N, Rovere-Jovene C, Tolle V, Viltart O, Epelbaum J.**

New Insights in Anorexia Nervosa. *Front Neurosci.* 2016 Jun 29;10:256.

### **Hassouna R, Zizzari P, Tomasetto C, Veldhuis JD, Fiquet O, Labarthe A, Cognet J, Steyn F, Chen C, Epelbaum J, Tolle V.**

An early reduction in GH peak amplitude in preproghrelin-deficient male mice has a minor impact on linear growth. *Endocrinology.* 2014 Sep;155(9):3561-71

### **Hassouna R, Labarthe A, Tolle V.**

Hypothalamic regulation of body growth and appetite by ghrelin-derived peptides during balanced nutrition or undernutrition. *Mol Cell Endocrinol.* 2016 Sep 28.

### **Jamar G, Caranti DA, de Cassia Cesar H, Landi Masquio DC, Bandoni DH, Pisani LP.**

Leptin as a cardiovascular risk marker in metabolically healthy obese: Hyperleptinemia in metabolically healthy obese. *Appetite.* 2016 Nov 9.

### **Kerem M, Ferahkose Z, Yilmaz UT, Pasaoglu H, Ofluoglu E, Bedirli A, Salman B, Sahin TT, Akin M.**

Adipokines and ghrelin in gastric cancer cachexia. *World J Gastroenterol.* 2008 Jun 21;14(23):3633-41.

### **Kuppens RJ, Diène G, Bakker NE, Molinas C, Faye S, Nicolino M, Bernoux D, Delhanty PJ, van der Lely AJ, Allas S, Julien M, Delale T, Tauber M, Hokken-Koelega AC.**

Elevated ratio of acylated to unacylated ghrelin in children and young adults with Prader-Willi syndrome. *Endocrine.* 2015 Dec;50(3):633-42.

### **López-Jaramillo P, Gómez-Arbeláez D, López-López J, López-López C, Martínez-Ortega J, Gómez-Rodríguez A, Triana-Cubillos S.**

The role of leptin/adiponectin ratio in metabolic syndrome and diabetes. *Horm Mol Biol Clin Investig.* 2014 Apr;18(1):37-45.

### **Lacroix MC, Caillol M, Durieux D, Monnerie R, Grebert D, Pellerin L, Repond C, Tolle V, Zizzari P, Baly C.**

Long-Lasting Metabolic Imbalance Related to Obesity Alters Olfactory Tissue Homeostasis and Impairs Olfactory-Driven Behaviors. *Chem Senses.* 2015 Oct;40(8):537-56.

# DIABESITY

### **Legroux-Gérot I, Vignau J, Biver E, Pigny P, Collier F, Marchandise X, Duquesnoy B, Cortet B.**

Anorexia nervosa, osteoporosis and circulating leptin: the missing link. *Osteoporos Int.* 2010 Oct;21(10):1715-22.

### **Méquinion M, Chauveau C, Viltart O.**

The use of animal models to decipher physiological and neurobiological alterations of anorexia nervosa patients. *Front Endocrinol (Lausanne).* 2015 May 19;6:68.

### **Méquinion M, Caron E, Zgheib S, Stievenard A, Zizzari P, Tolle V, Cortet B, Lucas S, Prévot V, Chauveau C, Viltart O.**

Physical activity: benefit or weakness in metabolic adaptations in a mouse model of chronic food restriction? *Am J Physiol Endocrinol Metab.* 2015 Feb 1;308(3):E241-55.

### **Mondello P, Lacquaniti A, Mondello S, Bolignano D, Pitini V, Aloisi C, Buemi M.**

Emerging markers of cachexia predict survival in cancer patients. *BMC Cancer.* 2014 Nov 16;14:828.

### **Morton GJ, Meek TH, Schwartz MW. (2014)**

Neurobiology of food intake in health and disease. *Nat Rev Neurosci.* 15(6):367-78.

### **Peat C, Mitchell JE, Hoek HW, Wonderlich SA (2009).**

“Validity and utility of subtyping anorexia nervosa”. *Int J Eat Disord.* 42 (7): 590–4.

### **Rikani AA, Choudhry Z, Choudhry AM, Ikram H, Asghar MW, Kajal D, Waheed A, Mobassarh NJ (2013).**

“A critique of the literature on etiology of eating disorders”. *Annals of Neurosciences.* 20 (4): 157–161.

### **Schaeffer M, Langlet F, Lafont C, Molino F, Hodson DJ, Roux T, Lamarque L, Verdié P, Bourrier E, Dehouck B, Banères JL, Martinez J, Méry PF, Marie J, Trinquet E, Fehrentz JA, Prévot V, Mollard P. (2013)**

Rapid sensing of circulating ghrelin by hypothalamic appetite-modifying neurons. *Proc Natl Acad Sci U S A.* 110(4):1512-7.

### **Smink, FR; van Hoeken, D; Hoek, HW (August 2012).**

“Epidemiology of eating disorders: incidence, prevalence and mortality rates.” *Current psychiatry reports.* 14 (4): 406–14.

### **Terra X, Auguet T, Agüera Z, Quesada IM, Orellana-Gavaldà JM, Aguilar C, Jiménez-Murcia S, Berlanga A, Guiu-Jurado E, Menchón JM, Fernández-Aranda F, Richart C.**

Adipocytokine levels in women with anorexia nervosa. Relationship with weight restoration and disease duration. *Int J Eat Disord.* 2013 Dec;46(8):855-61.

## ACRONYMS – FIGURE 1 – PAGE 5

**AgRP:** Agouti Related Protein;

**ARC:** arcuate nucleus;

**AP:** area postrema;

**CART:** Cocaine Amphetamine Related Transcript;

**CCK:** Cholecystokinin;

**DMH:** Dorsomedial Hypothalamic nucleus;

**GLP-1:** Glucagon-Like Peptide -1;

**GR:** Glucocorticoid receptor;

**LHA:** Lateral Hypothalamic Area;

**LXR:** Liver X receptor;

**NPY :** Neuropeptide Y;

**NTS:** Nucleus Tractus Solitarius;

**POMC:** Proopiomelanocortin;

**PPAR:** Peroxisome Proliferator-Activated Receptor;

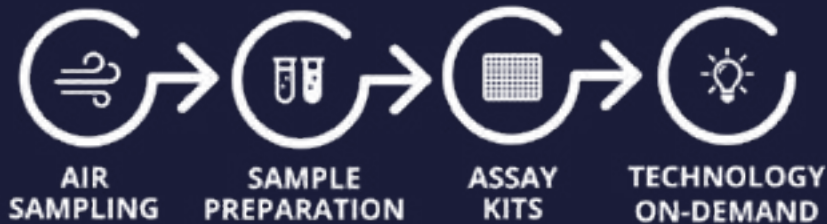
**PYY:** Peptide YYOXM: Oxytomodulin;

**QRFP-26RFa:** 26 amino-acid RF(Arg-Phe)amide;

**VMH:** Ventromedial Hypothalamic nucleus.



# Bertin Instruments & Bertin Bioreagent: Comprehensive Life Sciences Solutions



## OPTIMIZED SOLUTIONS

- EFFICIENT PRODUCTS
- INNOVATIVE SOLUTIONS
- EXPERTISES: ELECTROMECHANICS, OPTICS, SOFTWARES...

## TECHNOLOGY ON DEMAND

- PROJECT MANAGEMENT
- HARDWARE & SOFTWARE DEVELOPMENT
- BIOANALYSIS
- ELECTROMECHANICS, OPTICS

### HEAD OFFICE

Bertin Technologies SAS  
Parc d'activités du Pas du Lac  
10 bis, avenue Ampère  
78 180 Montigny-le-Bretonneux  
FRANCE

### US OFFICE

Bertin Corp  
11630-11634 Boiling Brook Parkway, Rockville  
MD 20852, United States

### ORDER

+33 (0)1 39 30 60 36  
order-life@bertin.fr  
order@bertin-corp.com (US)

### WEBSITE

[www.bertin-technologies.com](http://www.bertin-technologies.com)  
[www.bertin-bioreagent.com](http://www.bertin-bioreagent.com)