

# Product Information

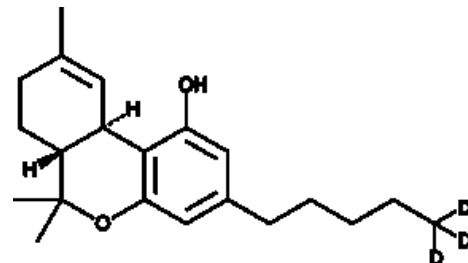


## $\Delta^9$ -THC-d<sub>3</sub> (CRM)

Cat No: 19332 - 1 mg

### General Data

<b>Shipping:</b>	dry ice
<b>Formulation:</b>	A 100 µg/ml or 1 mg/ml solution in methanol



**Special advice:** Reference Materials RMs and Certified Reference Materials CRMs are dispatched directly to the end-user in accordance with ISO requirements. Please check regulation status before ordering; additional fees can apply.

### Product Overview

$\Delta^9$ -THC-d<sub>3</sub> (CRM) (Item No. 19332) is a certified reference material that is intended for use as an internal standard for the quantification of  $\Delta^9$ -THC (Item Nos. 12068 ISO60157) by GC- or LC-MS.  $\Delta^9$ -THC is categorized as a cannabinoid. {20067,7912} It is psychoactive and has diverse effects on perception, cognition, and pain sensitivity. {21045}  $\Delta^9$ -THC-d<sub>3</sub> is regulated as a Schedule I compound in the United States.  $\Delta^9$ -THC-d<sub>3</sub> (CRM) (Item No. 19332) is provided as a DEA exempt preparation. This product is intended for research and forensic applications.

FP/03/24

For research laboratory use only – Not for human diagnostic use.

Buyers agree to purchase the material subject to Purchasing Terms that can be found on our website. Seek appropriate training to safely handle this product under normal conditions. Use the recommended personal protective equipment to prevent chemical exposures.

Bertin Bioreagent does not make any other warranty or representation whatsoever whether expressed or implied, with respect to these products. In no event will Bertin Bioreagent be liable for incidental, consequential or punitive damages.

Contact Bertin Bioreagent

Parc d'Activités du Pas du Lac  
10 bis avenue Ampère  
78180 Montigny le Bretonneux - France  
Tel.: +33 (0)139 306 036

<https://www.bertin-bioreagent.com/pa206/contact-us>  
<https://www.bertin-bioreagent.com>