

Product Information

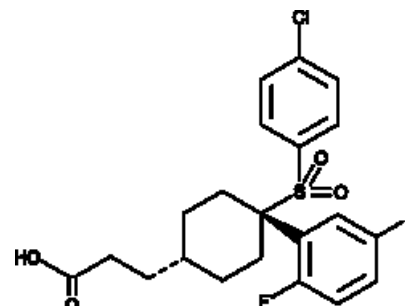


MK-0752

Cat No: 16706 - 1 mg

General Data

Shipping:	dry ice
Formulation:	A crystalline solid
Purity:	≥98%



Product Overview

γ -Secretase is a protease complex that cleaves single-pass transmembrane proteins, such as Notch receptors and β -amyloid precursor protein (APP), within the transmembrane domain.^{27051,25415} MK-0752 is a potent, reversible inhibitor of γ -secretase, reducing the cleavage of APP to A β 40 in human neuroblastoma SH-SY5Y cells with an IC₅₀ value of 5 nM.^{27408,27409} It is orally bioavailable and crosses the blood-brain barrier, as orally administered MK-0752 dose-dependently reduces the generation of new amyloid β protein in the brain of rhesus monkeys.^{27409} Through its effects on the Notch pathway, MK-0752 reduces the number of breast cancer stem cells in tumorgrafts, enhancing the efficacy of the chemotherapy drug docetaxel (Item No. 11637) in mice with breast cancer tumors.^{27410}

FP/03/24

For research laboratory use only – Not for human diagnostic use.

Buyers agree to purchase the material subject to Purchasing Terms that can be found on our website. Seek appropriate training to safely handle this product under normal conditions. Use the recommended personal protective equipment to prevent chemical exposures.

Bertin Bioreagent does not make any other warranty or representation whatsoever whether expressed or implied, with respect to these products. In no event will Bertin Bioreagent be liable for incidental, consequential or punitive damages.

Contact Bertin Bioreagent

Parc d'Activités du Pas du Lac
10 bis avenue Ampère
78180 Montigny le Bretonneux - France
Tel.: +33 (0)139 306 036

<https://www.bertin-bioreagent.com/pa206/contact-us>
<https://www.bertin-bioreagent.com>