

Product Information

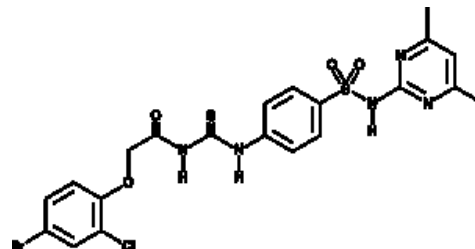


ZCL 278

Cat No: 14849 - 5 mg

General Data

Shipping:	dry ice
Formulation:	A crystalline solid
Purity:	≥95%



Product Overview

ZCL 278 is a cell-permeable inhibitor of Cdc42, a Rho family GTPase.^{32673} It binds into the surface groove on Cdc42 ($K_d = 6.4\text{--}11.4\ \mu\text{M}$), blocking interaction with intersectin (ITSN), a guanine nucleotide exchange factor (GEF).^{32673} It inhibits Cdc42-mediated microspike formation and neuronal branching in 3T3 fibroblast and neonatal cortical neurons, respectively.^{32673} ZCL 278 also exhibits potent antiviral activity by inhibiting cellular entry of Junin virus (JUNV) and other enveloped viruses into cells and inhibiting viral replication in mice.^{32672}

FP/03/24

For research laboratory use only – Not for human diagnostic use.

Buyers agree to purchase the material subject to Purchasing Terms that can be found on our website. Seek appropriate training to safely handle this product under normal conditions. Use the recommended personal protective equipment to prevent chemical exposures.

Bertin Bioreagent does not make any other warranty or representation whatsoever whether expressed or implied, with respect to these products. In no event will Bertin Bioreagent be liable for incidental, consequential or punitive damages.

Contact Bertin Bioreagent

Parc d'Activités du Pas du Lac
10 bis avenue Ampère
78180 Montigny le Bretonneux - France
Tel.: +33 (0)139 306 036

<https://www.bertin-bioreagent.com/pa206/contact-us>
<https://www.bertin-bioreagent.com>