

Product Information



H2AX Phospho-Ser 139 (1H2) Monoclonal Antibody

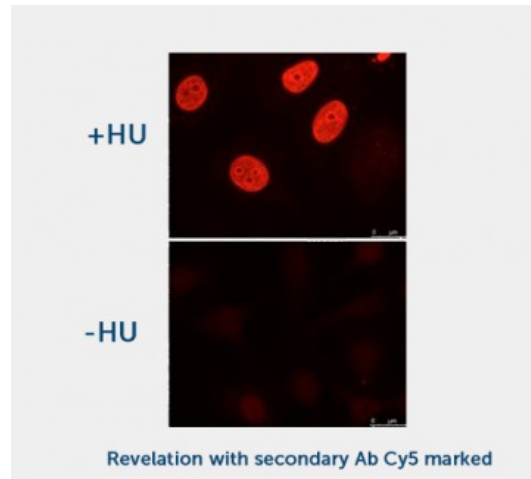
Cat No: G01106 - 100 μ L

General Data

Shipping:	wet ice
Formulation:	Liquid Ascite, does not contain any preservative therefore avoid repeat freezing and thawing cycles
Host:	mouse
Antigen:	Recombinant TLF protein
Clone:	14HH2-1H2
Isotype:	IgG1, κ

Application(s):	ELISA Western Blot Immunocytochemistry Recommended dilutions: 1/500-1/5000
------------------------	---

Specificity: mouse and human Histone H2 phosphorylated on Ser 139



Product Overview

DNA double strand break (DSB) are leading to the early phosphorylation of Histone H2AX. Phosphorylated Gamma-H2AX is the first step in the recruitment of the DNA repair protein at the foci site. They are consequently very good biomarkers of DNA double strand break as well as check point for cell cycle arrest following DSB.

Measuring gamma-H2AX phosphorylation has become a gold standard in DNA damage and repair for DSB events.

FP/04/24

For research laboratory use only – Not for human diagnostic use.

Buyers agree to purchase the material subject to Purchasing Terms that can be found on our website. Seek appropriate training to safely handle this product under normal conditions. Use the recommended personal protective equipment to prevent chemical exposures.

Bertin Bioreagent does not make any other warranty or representation whatsoever whether expressed or implied, with respect to these products. In no event will Bertin Bioreagent be liable for incidental, consequential or punitive damages.

Contact Bertin Bioreagent

Parc d'Activit s du Pas du Lac
10 bis avenue Amp re
78180 Montigny le Bretonneux - France
Tel.: +33 (0)139 306 036

<https://www.bertin-bioreagent.com/pa206/contact-us>
<https://www.bertin-bioreagent.com>