

Product Information

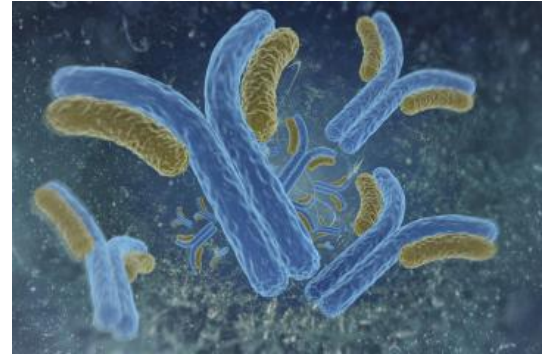


TIF1 γ Monoclonal Antibody

Cat No: G01101 - 100 μ L

General Data

Shipping:	wet ice
Formulation:	Liquid Ascite, does not contain any preservative therefore avoid repeat freezing and thawing cycles
Host:	Mouse
Antigen:	Synthetic peptide
Clone:	3E9
Isotype:	IgG1, κ
Application(s):	ELISA Western Blot Immunocytochemistry-Recommended dilutions: 1/500-1/5000
Specificity:	human and mouse TIF1 γ . No cross reactivity on TIF1 α and TIF1 β .



Scientific Literature

Venturini L, You J, Stadler M, Galien R, Lallemand V, Koken MH, Mattei MG, Ganser A, Chambon P, Losson R, de The H. TIF1 γ , a novel member of the transcriptional intermediary factor 1 family. *Oncogene*. 1999 Feb 4;18(5):1209-17.

FP/04/24

For research laboratory use only – Not for human diagnostic use.

Buyers agree to purchase the material subject to Purchasing Terms that can be found on our website. Seek appropriate training to safely handle this product under normal conditions. Use the recommended personal protective equipment to prevent chemical exposures.

Bertin Bioreagent does not make any other warranty or representation whatsoever whether expressed or implied, with respect to these products. In no event will Bertin Bioreagent be liable for incidental, consequential or punitive damages.

Contact Bertin Bioreagent

Parc d'Activités du Pas du Lac
10 bis avenue Ampère
78180 Montigny le Bretonneux - France
Tel.: +33 (0)139 306 036

<https://www.bertin-bioreagent.com/pa206/contact-us>
<https://www.bertin-bioreagent.com>