

# Product Information

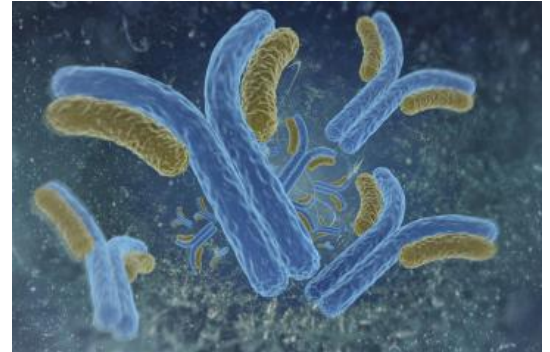


## Heterochromatin Protein 1 $\gamma$ (HP-1 $\gamma$ ) Monoclonal Antibody

Cat No: G01049 - 100  $\mu$ L

### General Data

<b>Shipping:</b>	wet ice
<b>Formulation:</b>	Liquid Ascite, does not contain any preservative therefore avoid repeat freezing and thawing cycles
<b>Host:</b>	Mouse
<b>Antigen:</b>	Recombinant mouse HP1 $\gamma$
<b>Clone:</b>	1G6



<b>Application(s):</b>	ELISA Western blot Immunohistochemistry Immunofluorescence Immunoprecipitation Recommended dilution : 1/500 – 1/ 5000
------------------------	--

**Specificity:** Hp1 $\gamma$  protein from mouse and human

### Scientific Literature

NIELSEN A.L., ORTIZ J.A., YOU J., OULAD ABDELGHANI M., KHECHUMIAN R., GANSMULLER A., CHAMBON P. AND LOSSON R. (1999). EMBO J. 18: 6385-6395

FP/22/24

**For research laboratory use only – Not for human diagnostic use.**

Buyers agree to purchase the material subject to Purchasing Terms that can be found on our website. Seek appropriate training to safely handle this product under normal conditions. Use the recommended personal protective equipment to prevent chemical exposures.

Bertin Bioreagent does not make any other warranty or representation whatsoever whether expressed or implied, with respect to these products. In no event will Bertin Bioreagent be liable for incidental, consequential or punitive damages.

**Contact Bertin Bioreagent**

Parc d'Activités du Pas du Lac  
10 bis avenue Ampère  
78180 Montigny le Bretonneux - France  
Tel.: +33 (0)139 306 036

<https://www.bertin-bioreagent.com/pa206/contact-us>  
<https://www.bertin-bioreagent.com>