

Product Information

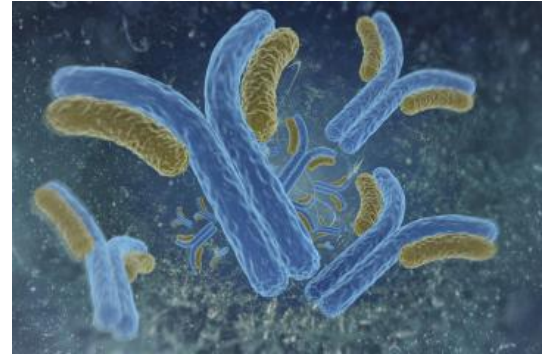


Proteasome 26S Monoclonal Antibody

Cat No: G01065 - 100 μ L

General Data

Shipping:	wet ice
Formulation:	Liquid Ascite, does not contain any preservative therefore avoid repeat freezing and thawing cycles
Host:	Mouse
Antigen:	synthetic peptide
Clone:	1D12
Isotype:	IgG1, κ
Application(s):	ELISA Western Blot Immunocytochemistry Immunoprecipitation Recommended dilutions: 1/500-1/5000
Specificity:	human, mouse and rat Proteasome 26S subunit.



FP/03/24

For research laboratory use only – Not for human diagnostic use.

Buyers agree to purchase the material subject to Purchasing Terms that can be found on our website. Seek appropriate training to safely handle this product under normal conditions. Use the recommended personal protective equipment to prevent chemical exposures.

Bertin Bioreagent does not make any other warranty or representation whatsoever whether expressed or implied, with respect to these products. In no event will Bertin Bioreagent be liable for incidental, consequential or punitive damages.

Contact Bertin Bioreagent

Parc d'Activit s du Pas du Lac
10 bis avenue Amp re
78180 Montigny le Bretonneux - France
Tel.: +33 (0)139 306 036

<https://www.bertin-bioreagent.com/pa206/contact-us>
<https://www.bertin-bioreagent.com>