

# Product Information

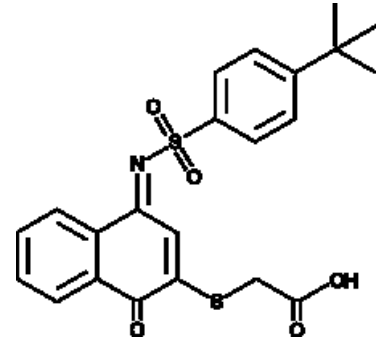


**KPT-6566**

Cat No: 37308 - 5 mg

## General Data

<b>Shipping:</b>	dry ice
<b>Formulation:</b>	A solid
<b>Purity:</b>	≥98%



FP/30/24

For research laboratory use only – Not for human diagnostic use.

Buyers agree to purchase the material subject to Purchasing Terms that can be found on our website. Seek appropriate training to safely handle this product under normal conditions. Use the recommended personal protective equipment to prevent chemical exposures.

Bertin Bioreagent does not make any other warranty or representation whatsoever whether expressed or implied, with respect to these products. In no event will Bertin Bioreagent be liable for incidental, consequential or punitive damages.

Contact Bertin Bioreagent

Parc d'Activités du Pas du Lac  
10 bis avenue Ampère  
78180 Montigny le Bretonneux - France  
Tel.: +33 (0)139 306 036

<https://www.bertin-bioreagent.com/pa206/contact-us>  
<https://www.bertin-bioreagent.com>