

Product Information

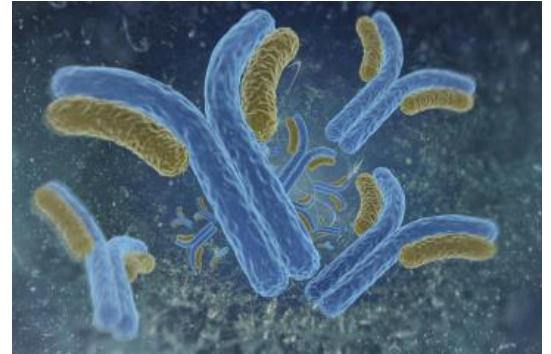


Estrogen receptor β (B region) Monoclonal Antibody

Cat No: G01010 - 100 μ L

General Data

Shipping:	wet ice
Formulation:	Liquid Ascite, does not contain any preservative therefore avoid repeat freezing and thawing cycles
Host:	Mouse
Antigen:	synthetic peptide coupled to ovalbumin
Clone:	2H9
Isotype:	IgG1, κ



Application(s):	ELISA Western Blot Immunofluorescence recommended dilution: 1/500-1/5000
------------------------	---

Specificity: Mouse and human ER β . The peptide used as immunogen derived from the B region of mouse ER β . Clone 6ER β -2H9 reacts on ER β from mouse and human origin. No cross-reactivity has been observed on ER α .

Product Overview

There are two classes of Estrogen Receptors (ER,) the first is intracellular and translocate to the Nucleus when activated through binding to 17 beta estradiol. They are named ER alpha and ER beta. The second G protein couples receptors which are membranes proteins and have intracellular signaling function. central ER α signaling is necessary for the actions of GLP-1 on food-reward behavior.

FP/04/24

For research laboratory use only – Not for human diagnostic use.

Buyers agree to purchase the material subject to Purchasing Terms that can be found on our website. Seek appropriate training to safely handle this product under normal conditions. Use the recommended personal protective equipment to prevent chemical exposures.

Bertin Bioreagent does not make any other warranty or representation whatsoever whether expressed or implied, with respect to these products. In no event will Bertin Bioreagent be liable for incidental, consequential or punitive damages.

Contact Bertin Bioreagent

Parc d'Activités du Pas du Lac
10 bis avenue Ampère
78180 Montigny le Bretonneux - France
Tel.: +33 (0)139 306 036

<https://www.bertin-bioreagent.com/pa206/contact-us>
<https://www.bertin-bioreagent.com>