

# Product Information

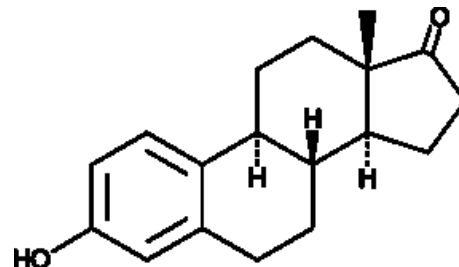


**Estrone (CRM)**  
Cat No: ISO60165 - 1 mg

## General Data

**Shipping:** dry ice

**Formulation:** A 1 mg/ml solution in methanol



**Special advice:** Reference Materials RMs and Certified Reference Materials CRMs are dispatched directly to the end-user in accordance with ISO requirements.

## Product Overview

Estrone (CRM) (Item No. ISO60165) is a certified reference material categorized as an estrogen.<sup>{49721}</sup> Estrone is a steroid hormone produced from androstenedione (Item Nos. ISO60161 9001311) that can be reversibly converted into 17β-estradiol (Item Nos. ISO60155 10006315). Circulating levels of estrone are higher than those of estradiol in postmenopausal women and men.<sup>{40244}</sup> Increased circulating estrone levels in postmenopausal women are associated with an increased risk of breast cancer.<sup>{49721}</sup> This product is intended for use in analytical research applications. This product is also available as a general research tool (Item No. 10006485).

FP/03/24

For research laboratory use only – Not for human diagnostic use.

Buyers agree to purchase the material subject to Purchasing Terms that can be found on our website. Seek appropriate training to safely handle this product under normal conditions. Use the recommended personal protective equipment to prevent chemical exposures.

Bertin Bioreagent does not make any other warranty or representation whatsoever whether expressed or implied, with respect to these products. In no event will Bertin Bioreagent be liable for incidental, consequential or punitive damages.

Contact Bertin Bioreagent

Parc d'Activités du Pas du Lac  
10 bis avenue Ampère  
78180 Montigny le Bretonneux - France

Tel.: +33 (0)139 306 036

<https://www.bertin-bioreagent.com/pa206/contact-us>

<https://www.bertin-bioreagent.com>