

# Product Information



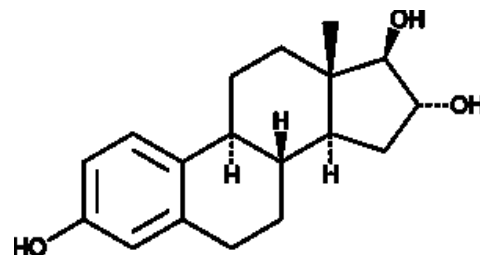
## Estriol (CRM)

Cat No: ISO60164 - 1 mg

### General Data

**Shipping:** dry ice

**Formulation:** A 1 mg/ml solution in methanol



**Special advice:** Reference Materials RMs and Certified Reference Materials CRMs are dispatched directly to the end-user in accordance with ISO requirements.

### Product Overview

Estriol (CRM) (Item No. ISO60164) is a certified reference material categorized as an estrogen. Estriol is a metabolite of estradiol and estrone. Estriol levels, often quantified in saliva samples, increase during pregnancy with 90% produced from fetal dehydroepiandrosterone sulfate (DHEAS), allowing maternal levels to be used as a biomarker for fetal adrenal gland activity. Estriol levels increase dramatically just prior to birth, a change that can be monitored as a biomarker for spontaneous preterm labor. This product is intended for use in analytical research applications. This product is also available as a general research tool (Item No. 10006484).

FP/05/24

For research laboratory use only – Not for human diagnostic use.

Buyers agree to purchase the material subject to Purchasing Terms that can be found on our website. Seek appropriate training to safely handle this product under normal conditions. Use the recommended personal protective equipment to prevent chemical exposures.

Bertin Bioreagent does not make any other warranty or representation whatsoever whether expressed or implied, with respect to these products. In no event will Bertin Bioreagent be liable for incidental, consequential or punitive damages.

Contact Bertin Bioreagent

Parc d'Activités du Pas du Lac  
10 bis avenue Ampère  
78180 Montigny le Bretonneux - France  
Tel.: +33 (0)139 306 036

<https://www.bertin-bioreagent.com/pa206/contact-us>  
<https://www.bertin-bioreagent.com>