



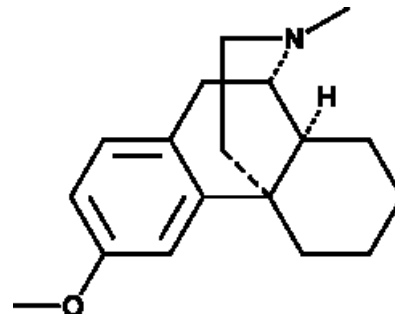
Dextromethorphan (CRM)

Cat No: ISO60141 - 1 mg

General Data

Shipping: dry ice

Formulation: A 1 mg/ml solution in methanol



Special advice: Reference Materials RMs and Certified Reference Materials CRMs are dispatched directly to the end-user in accordance with ISO requirements. Please check regulation status before ordering; additional fees can apply.

Product Overview

Dextromethorphan (DXM) is a dextrarotatory morphinan with structural similarity to levorphanol, codeine, and morphine. Because of its strong antitussive effects, dextromethorphan is widely used as a cough suppressant. However, it does not provoke opioid activity as is characteristic of several other morphine derivatives. DXM binds to and inhibits NMDA (IC₅₀ = 0.55 μM) and nicotinic receptors (IC₅₀s = 0.7-3.9 μM) and blocks receptor-gated and voltage-gated calcium channels (IC₅₀ = 60 μM) and voltage-gated sodium channels (IC₅₀ = 78 μM). DXM has been used in multimodal analgesic therapies for acute and neuropathic pain.

FP/03/24

For research laboratory use only – Not for human diagnostic use.

Buyers agree to purchase the material subject to Purchasing Terms that can be found on our website. Seek appropriate training to safely handle this product under normal conditions. Use the recommended personal protective equipment to prevent chemical exposures.

Bertin Bioreagent does not make any other warranty or representation whatsoever whether expressed or implied, with respect to these products. In no event will Bertin Bioreagent be liable for incidental, consequential or punitive damages.

Contact Bertin Bioreagent

Parc d'Activités du Pas du Lac
10 bis avenue Ampère
78180 Montigny le Bretonneux - France
Tel.: +33 (0)139 306 036

<https://www.bertin-bioreagent.com/pa206/contact-us>
<https://www.bertin-bioreagent.com>