

# Product Information

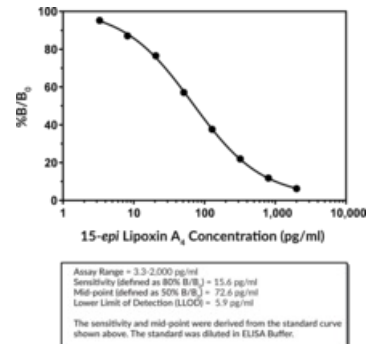


## 15-*epi* Lipoxin A<sub>4</sub> ELISA Kit

Cat No: 590415 - 96 solid well

### General Data

Shipping: dry ice



### Product Overview

Cayman's 15-*epi* Lipoxin A<sub>4</sub> (15-*epi* LXA<sub>4</sub>) ELISA Kit is a competitive assay that can be used for quantification of 15-*epi* LXA<sub>4</sub> in plasma, serum, and urine. The assay has a range of 3.3-2,000 pg/ml and a sensitivity (80% B/B<sub>0</sub>) of approximately 16 pg/ml.

FP/03/24

For research laboratory use only – Not for human diagnostic use.

Buyers agree to purchase the material subject to Purchasing Terms that can be found on our website. Seek appropriate training to safely handle this product under normal conditions. Use the recommended personal protective equipment to prevent chemical exposures.

Bertin Bioreagent does not make any other warranty or representation whatsoever whether expressed or implied, with respect to these products. In no event will Bertin Bioreagent be liable for incidental, consequential or punitive damages.

Contact Bertin Bioreagent

Parc d'Activités du Pas du Lac  
10 bis avenue Ampère  
71810 Montigny le Bretonneux - France

Tel.: +33 (0)139 306 036

<https://www.bertin-bioreagent.com/pa206/contact-us>

<https://www.bertin-bioreagent.com>