

Product Information



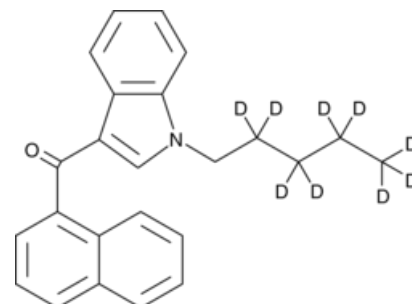
JWH 018-d₉ (CRM)

Cat No: 27726 - 1 mg

General Data

Shipping: dry ice

Formulation: A 1 mg/ml solution in methanol



Special advice: Reference Materials RMs and Certified Reference Materials CRMs are dispatched directly to the end-user in accordance with ISO requirements. Please check regulation status before ordering; additional fees can apply.

Product Overview

JWH 018-d₉ (CRM) (Item No. 27726) is a certified reference material intended for use as an internal standard for the quantification of JWH 018 (Item Nos. 10900 13169) by GC- or LC-MS. JWH 018 is categorized as a synthetic cannabinoid. It has been found in Spice/K2-type herbal blends and may have neurotoxic properties. JWH 018-d₉ is regulated as a Schedule I compound in the United States. JWH 018-d₉ (CRM) (Item No. 27726) is provided as a DEA exempt preparation. This product is intended for research and forensic applications.

FP/03/24

For research laboratory use only – Not for human diagnostic use.

Buyers agree to purchase the material subject to Purchasing Terms that can be found on our website. Seek appropriate training to safely handle this product under normal conditions. Use the recommended personal protective equipment to prevent chemical exposures.

Bertin Bioreagent does not make any other warranty or representation whatsoever whether expressed or implied, with respect to these products. In no event will Bertin Bioreagent be liable for incidental, consequential or punitive damages.

Contact Bertin Bioreagent

Parc d'Activités du Pas du Lac
10 bis avenue Ampère
78180 Montigny le Bretonneux - France

Tel.: +33 (0)139 306 036

<https://www.bertin-bioreagent.com/pa206/contact-us>

<https://www.bertin-bioreagent.com>