

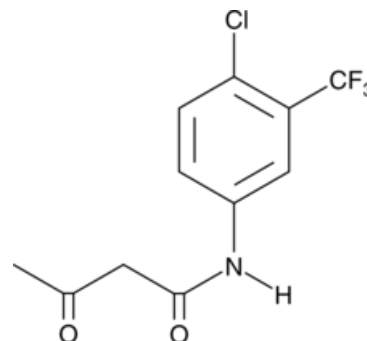


Fasentin

Cat No: 27050 - 1 mg

General Data

Shipping:	dry ice
Formulation:	A solid
Purity:	≥95%



Product Overview

Fasentin is an inhibitor of glucose transport.^{43670} It partially inhibits glucose uptake in U937 and DU145 cells when used at concentrations ranging from 15 to 80 μ M. Fasentin sensitizes PPC-1 prostate cancer and U937 leukemia cells, but not DU145 prostate cancer cells, to cell death induced by the Fas receptor activator CH-11 activating anti-Fas antibody (FAS). It also increases the expression of AspSyn and PCK2, genes associated with glucose deprivation, in PPC-1 cells and halts the cell cycle at the G₀/G₁ phase in U937 cells when used at concentrations of 50 and 40 μ M, respectively.

FP/22/24

For research laboratory use only – Not for human diagnostic use.

Buyers agree to purchase the material subject to Purchasing Terms that can be found on our website. Seek appropriate training to safely handle this product under normal conditions. Use the recommended personal protective equipment to prevent chemical exposures.

Bertin Bioreagent does not make any other warranty or representation whatsoever whether expressed or implied, with respect to these products. In no event will Bertin Bioreagent be liable for incidental, consequential or punitive damages.

Contact Bertin Bioreagent

Parc d'Activités du Pas du Lac
10 bis avenue Ampère
78180 Montigny le Bretonneux - France
Tel.: +33 (0)139 306 036

<https://www.bertin-bioreagent.com/pa206/contact-us>
<https://www.bertin-bioreagent.com>