

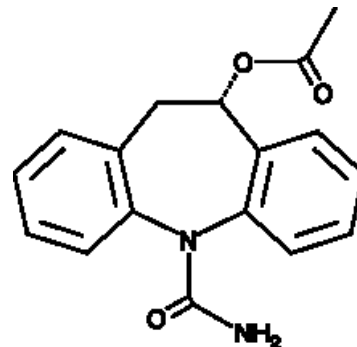


## Eslicarbazepine Acetate

Cat No: 23656 - 5 mg

### General Data

<b>Shipping:</b>	dry ice
<b>Formulation:</b>	A solid
<b>Purity:</b>	≥95%



### Product Overview

Eslicarbazepine acetate is a sodium channel blocker (IC<sub>50</sub> = 138 nM in a radioligand binding assay).{40363} It inhibits sodium uptake in a dose-dependent manner in rat cortical synaptosomes at concentrations ranging from 30-300 μM. In vivo, oral and i.p. administration of eslicarbazepine acetate is protective against seizures induced by maximal electroshock (MES) in mice with ED<sub>50</sub> values of 4.7 and 6.3 mg/kg, respectively, which are well below the median toxic dose (TD<sub>50</sub>) values of 358.7 and 78.6 mg/kg for oral and i.p. administration respectively. High-dose administration (30 mg/kg) of eslicarbazepine acetate prevents picrotoxin-induced seizures in rats.{40364} Low-dose administration (10 mg/kg) does not suppress picrotoxin-induced seizures, however, it reduces seizure number and duration. Formulations containing eslicarbazepine acetate have been used for the treatment of partial-onset seizures.{40365}

FP/03/24

For research laboratory use only – Not for human diagnostic use.

Buyers agree to purchase the material subject to Purchasing Terms that can be found on our website. Seek appropriate training to safely handle this product under normal conditions. Use the recommended personal protective equipment to prevent chemical exposures.

Bertin Bioreagent does not make any other warranty or representation whatsoever whether expressed or implied, with respect to these products. In no event will Bertin Bioreagent be liable for incidental, consequential or punitive damages.

Contact Bertin Bioreagent

Parc d'Activités du Pas du Lac  
10 bis avenue Ampère  
78180 Montigny le Bretonneux - France

Tel.: +33 (0)139 306 036

<https://www.bertin-bioreagent.com/pa206/contact-us>

<https://www.bertin-bioreagent.com>